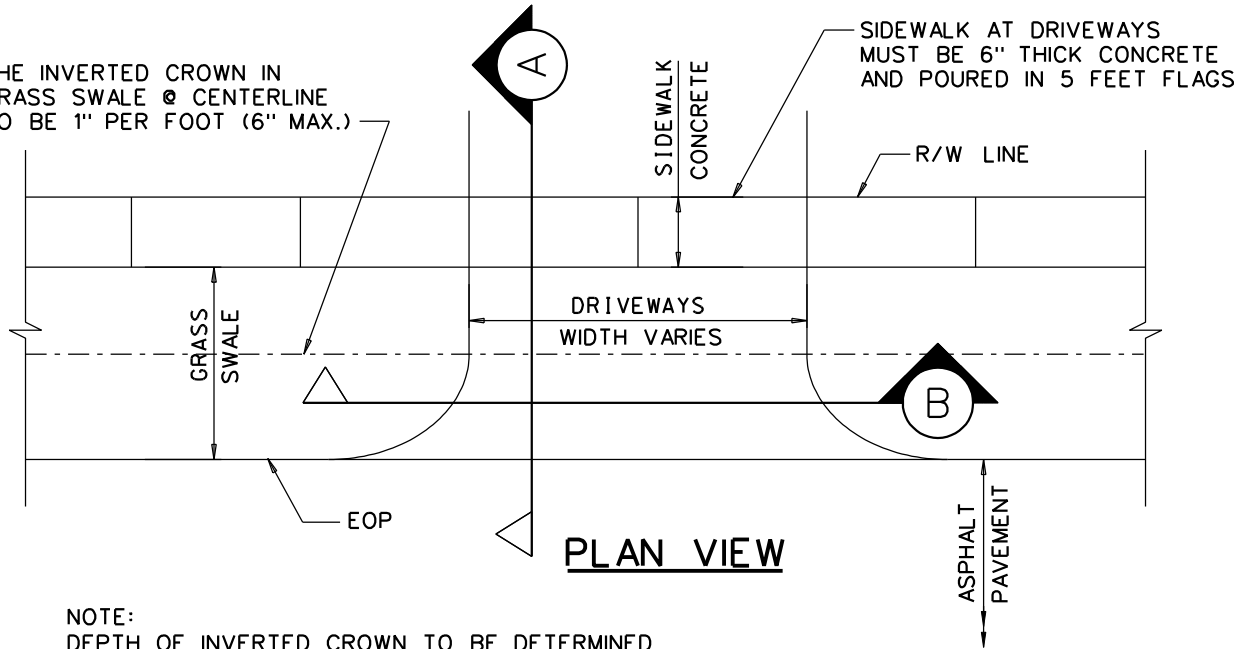
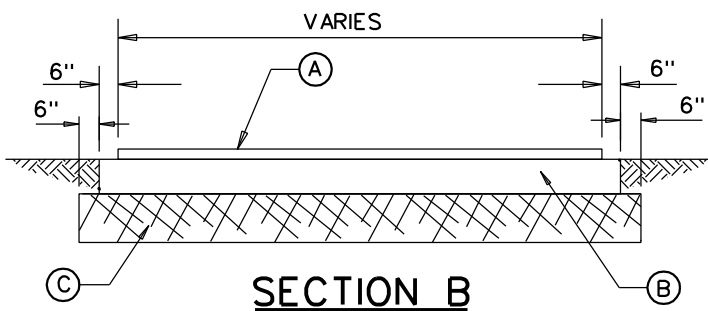
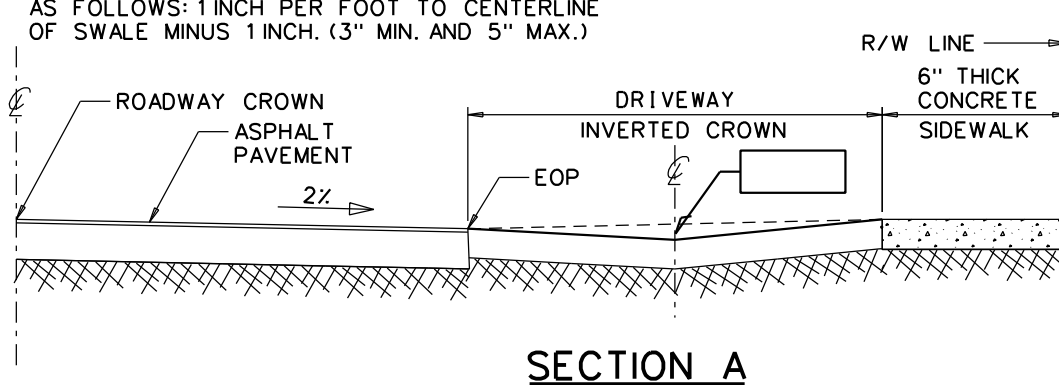


THE INVERTED CROWN IN GRASS SWALE @ CENTERLINE TO BE 1" PER FOOT (6" MAX.)



NOTE:
DEPTH OF INVERTED CROWN TO BE DETERMINED AS FOLLOWS: 1 INCH PER FOOT TO CENTERLINE OF SWALE MINUS 1 INCH. (3" MIN. AND 5" MAX.)



- (A) WEARING COURSE:
 ASPHALT DRIVEWAYS:
 1 1/2" THICK MIN. (COMMERCIAL & INDUSTRIAL)
 1" THICK MIN. (RESIDENTIAL)
 FDOT TYPE S-III OR SP-9.5 TYPE C.
 CONCRETE DRIVEWAYS:
 6" MIN. THICKNESS, 3,000 PSI CONCRETE WITH EITHER FIBER MESH CONCRETE OR 6"x6"x10G WELDED WIRE MESH
 BRICK PAVER DRIVEWAYS:
 2 3/8" THICK PAVER BRICK
 TRAVERTINE PAVER (NOCHE TUMBLED FINISH ONLY) DRIVEWAYS:
 1 3/8" THICKNESS
- (B) BASE COURSE:
 ASPHALT DRIVEWAYS:
 6" MIN. LIMEROCK BASE COMPACTED TO 98% PER AASHTO FM 1-T180, METHOD D.
 CONCRETE DRIVEWAYS:
 NOT APPLICABLE
 BRICK PAVER DRIVEWAYS:
 4" MIN. LIMEROCK BASE COMPACTED TO 98% PER AASHTO FM 1-T180, METHOD D.
 TRAVERTINE PAVER (NOCHE TUMBLED FINISH ONLY) DRIVEWAYS:
 6" MINIMUM LIMEROCK BASE COMPACTED TO 98% PER AASHTO FM 1-80, METHOD D.
- (C) SUBGRADE:
 12" CLEAN SUBGRADE COMPACTED TO 98% PER ASSHTO FM 1-T180.

- NOTES:
1. GRADING AND PREPARATION OF SUBGRADE/BASE COURSES SHALL BE APPROVED BY THE ENGINEERING DEPT. PRIOR TO APPLICATION PAVEMENT SURFACE MATERIALS.
 2. REFER TO "RESIDENTIAL TRAVERTINE PAVER DRIVEWAY IN CITY ROW CROSS SECTION DETAIL FOR ADDITIONAL INSTALLATION REQUIREMENTS APPLICABLE TO THE USE OF TRAVERTINE PAVERS.
 3. REFER TO "RESIDENTIAL BRICK PAVER DRIVEWAY IN CITY ROW CROSS SECTION DETAIL FOR ADDITIONAL INSTALLATION REQUIREMENTS APPLICABLE TO THE USE OF BRICK PAVERS.

CITY OF PLANTATION
ENGINEERING STANDARDS
PLANTATION, FLORIDA

SCALE:
N.T.S.
REVISED:
03-25-13

STANDARD DETAIL
DRIVEWAYS IN CITY ROW