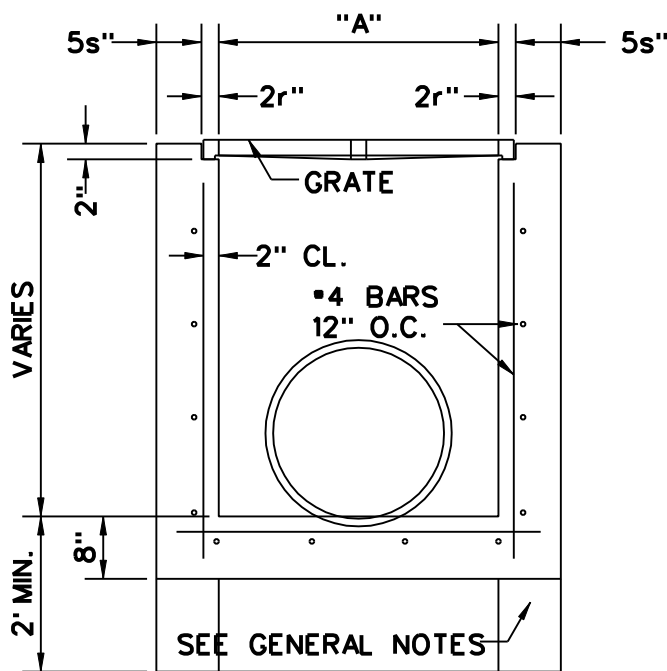
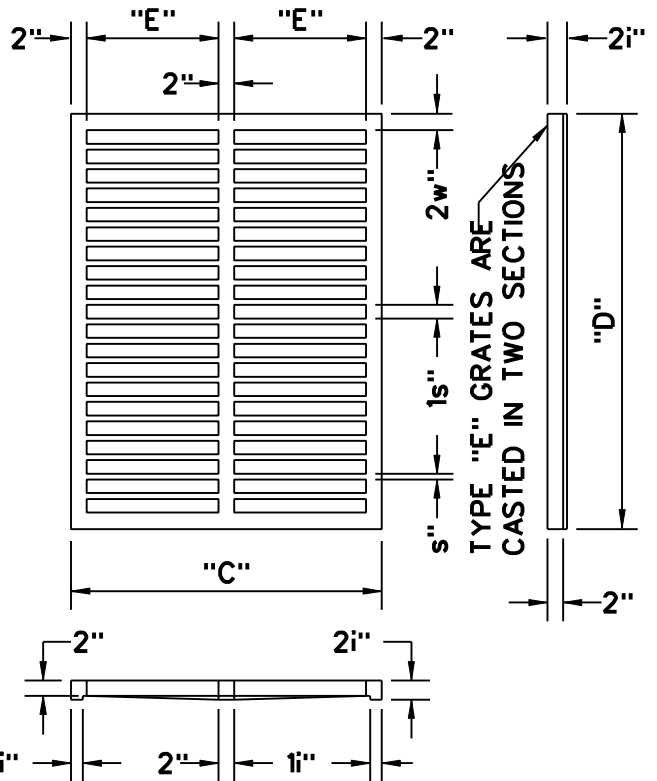


ROAD
(FOR TYPES "C" & "E")



| TYPE INLET | DIMENSIONS | | | | | MAX. SIZE R.C.P. |
|---------------|------------|-------|-------|-------|-------|------------------------|
| | "A" | "B" | "C" | "D" | "E" | |
| "C" | 2'-0" | 3'-1" | 2'-4" | 3'-0" | 11" | 18" |
| "E" | 3'-0" | 4'-6" | 3'-4" | 4'-4" | 1'-5" | 30" |
| "E MOD" x | 3'-0" | 4'-6" | 3'-4" | 4'-4" | 1'-5" | 48" |

NOTE: SEE STD. PLAN FOR DETAILS WHEN USING THIS TYPE INLET WITH VALLEY GUTTER ROAD SECTIONS.



BEVELED EDGES:

ALL EXPOSED CORNERS AND EDGES TO BE CHAMFERED s".

FOUNDATION MATERIAL:

WHERE MATERIAL UNSATISFACTORY FOR FOUNDATION IS ENCOUNTERED AT FLOW LINE, OMIT FLOOR AND CARRY WALLS DOWN TO SATISFACTORY FOUNDATION. BACKFILL TO FLOW LINE WITH CLEAN SAND.

GRATES:

CAST IRON GRATES IN ACCORDANCE WITH FLA. D.O.T. SPECS.

* INLET TYPES:

INLETS ARE TO BE AS SHOWN HEREON. TYPE "E MOD." IS A TYPE "E" TURNED 90° TO RECEIVE R.C.P. UP TO 48" DIA. INLETS RECEIVING R.C.P. LARGER THAN 48" DIA. SHALL BE IN ACCORDANCE WITH FLA. D.O.T. STANDARDS.

MATERIAL:

INLET WALLS AND FOOTING MAY EITHER BE POURED-IN-PLACE 2500 LB. CONC.; OR PRECAST CLASS "A" 3000 L.B. CONC.; OR STANDARD MANHOLE BRICK (NO BLOCK) WITH 1" PLASTER (NO LIME) WITH 8" PRECAST CAP.

CITY OF PLANTATION
ENGINEERING STANDARDS
PLANTATION, FLORIDA

SCALE:
N.T.S.
REVISED:

STANDARD STORM
INLET DETAIL