

Plantation State of the City

Mayor Lynn Stoner

May 5, 2021



Plantation: A Unique Jewel in Central Broward



- Incorporated April 1953
- Ninth largest City in Broward County, and is home to a number of large national and international firms
- Stable business community supported by three distinct Business Districts – Over 5000 Businesses
- Recognized for over 35 consecutive years, as “Tree City USA”
- National Wildlife Federation “Community Wildlife Habitat”
- Recognized by America’s Promise Alliance as one of the “100 Best Communities for Young People”
- Recognized by Florida Green Building Coalition as a “Green Local Government”



Plantation: A Full-Service City



- Home to our own municipal Golf Course, Plantation Preserve
- One of the few cities in Broward County with its own municipal library – Helen B. Hoffman Plantation Library
- The largest all volunteer Fire Department in Florida (ISO rating of 2)
- Police Department is fully accredited both nationally and by the State of FL
- The largest all volunteer athletic program in the country (PAL)
- One of only two independent Dispatch Centers in the County
- \$60M GO Bond with improvements in Parks & Rec, Public Safety, and Public Works
- *One of the lowest millage rates in Broward County (5.8000)*



Plantation at a Glance

- Run by a Strong Mayor and five-member City Council
- Population 94,580*
- Median income: \$74,903*
- Median age: 40.2*
- Area: 22.8 square miles



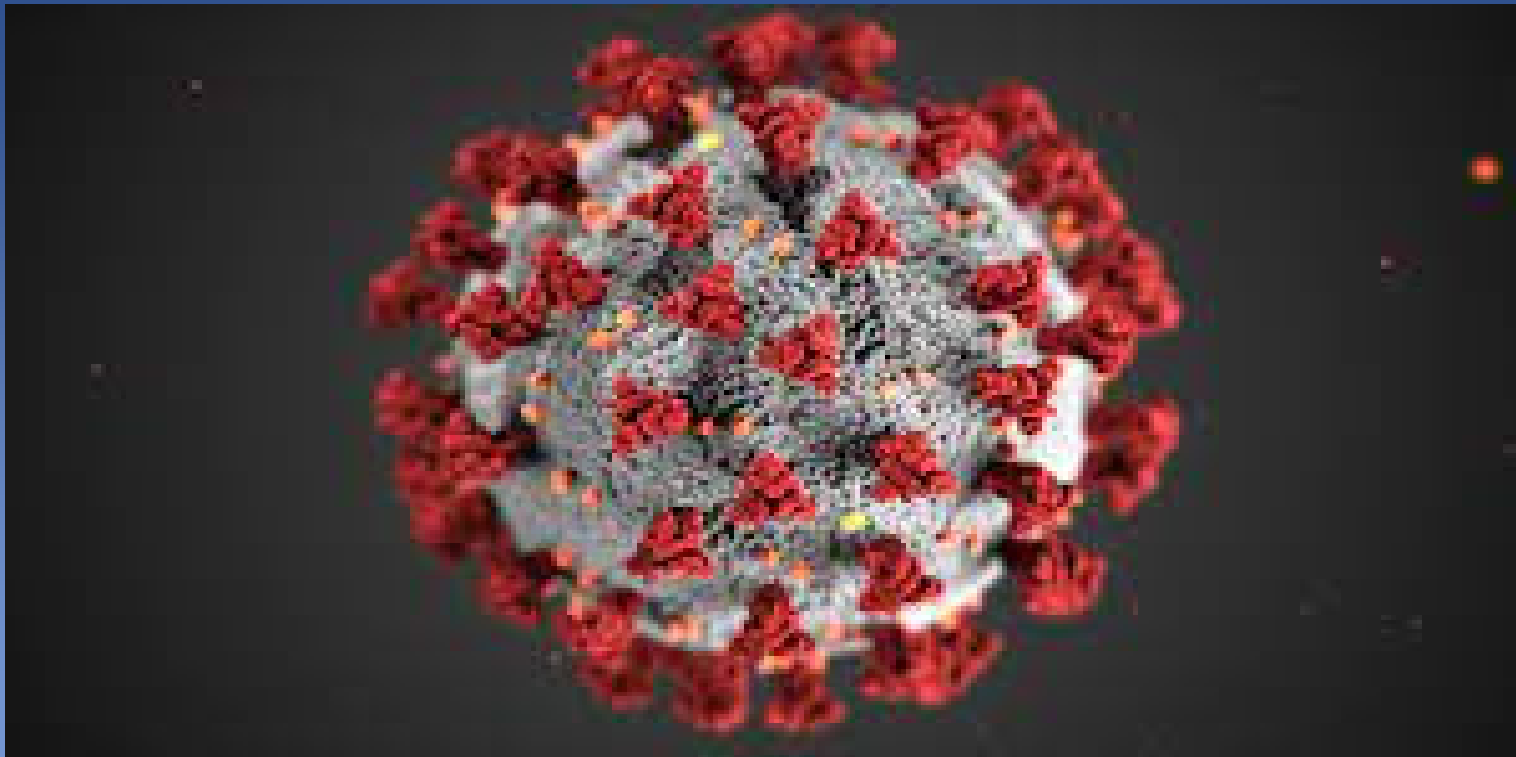
*As of July 1, 2019; American Fact Finder, Census.gov

#TeamPlantation: Ready to Meet the Challenge



- Covid-19
- 2016 GO Bond/Capital Projects
- Development
- Traffic

Covid-19: A Yearlong Hurricane



The Response

Transition Period (March '20 – May '20)



- Directors worked with Human Resources to create specialized plans for each area of City operations – All Departments Continued Working
- Public Works implementation of safety mechanisms throughout facilities to ensure staff safety and continuity of operations
- Implementation of Zoom
- Initiate Food Distributions @ Central Park (Feeding South FI)
- Return to work for all employees May '20
- Procurement processes moved to Zoom
- Implementation of Citizen Updates

The Response

Transition Period (March '20 – May '20)



- Test all employees concurrent with RTW
- Implementation of Podcasts
- Implementation of “Covid-19 Rescue Unit”
- Blue Bag Delivery 😊
- Public Safety Drive By’s for Residents
- P&R Virtual Outreach

The Response

New Normal (June '20 – April '21)



- Reopen pursuant to CDC protocols
- Implementation of financial assistance (\$4.1M)
 - \$1.92M in direct rental assistance (140 Households)
 - \$655k in direct rental assistance allocated through County CARES
 - \$723k in direct small business assistance allocated through County CARES
 - *\$800K in additional rental assistance pending*
- Interim code relief for business
 - Outdoor seating
 - Waive signage restrictions
- Partner w/ County Code Enforcement
- Drive through graduation
- Move forward e-permitting

The Response

Return to “Normalcy” (May ‘21 -)



Effective May 10th all facilities open to the public

- Masking & social distancing required
- Capacity limitations

Vaccination Pod @ Central Park

- Pre-Registration only
- Choice of vaccines
- <https://www.milo.care/plantationvaccine>

The Financial Impact



FY20 Revenue Losses	(Vs FY19)	(\$5.9M) ¹
FY21 Revenue Losses	(Vs FY19)	(\$2.9M) ²
FY21 Capital Cuts		-\$4.7M
American Rescue Plan Act of 2021		\$13.5M

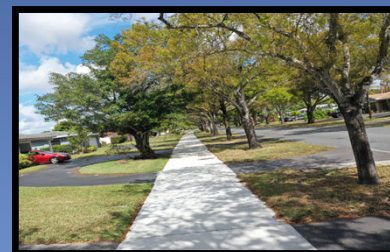
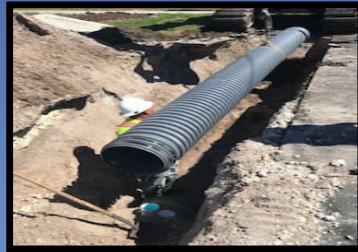
¹ GF, Golf, UT 1 YR Actuals

² GF, Golf, UT 6 MTS Actuals



Plantation
the grass is greener™

2017 GO Bond Update



2017 GO Bond Update



• Public Safety :	\$14,104, 337
• Parks & Recreation:	\$16,984,800
• Public Works:	<u>\$28,506,654</u>
Net Proceeds	\$59,595,791

2017 GO Bond Update

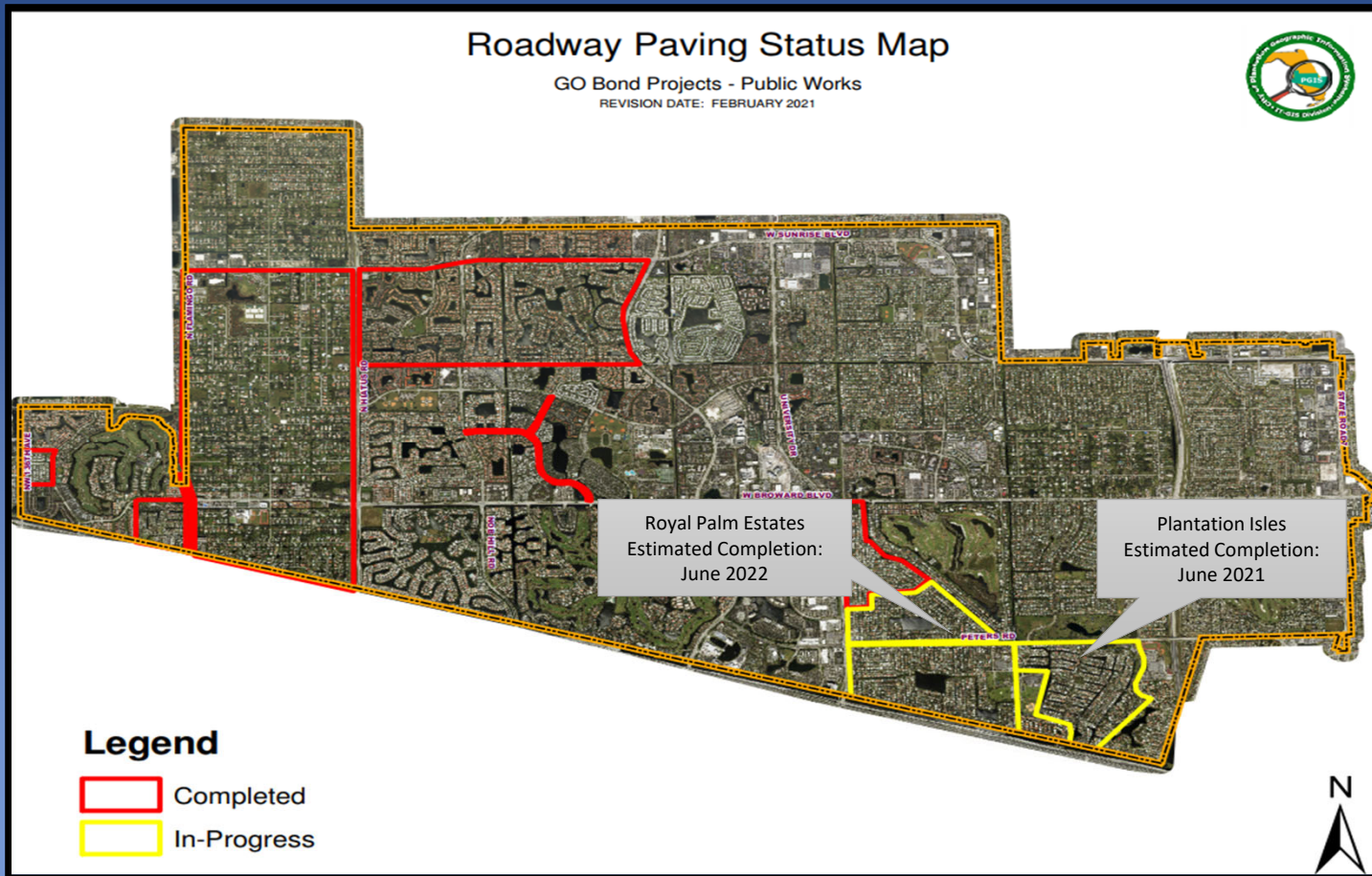
Public Works



- Roadway Paving – In Progress
- Replacement Building for Public Works ✓
- Neighborhood Street Lighting ✓
- Storm Water System Rehabilitation & Replacement – In Progress
- GPS Database for Stormwater Systems ✓

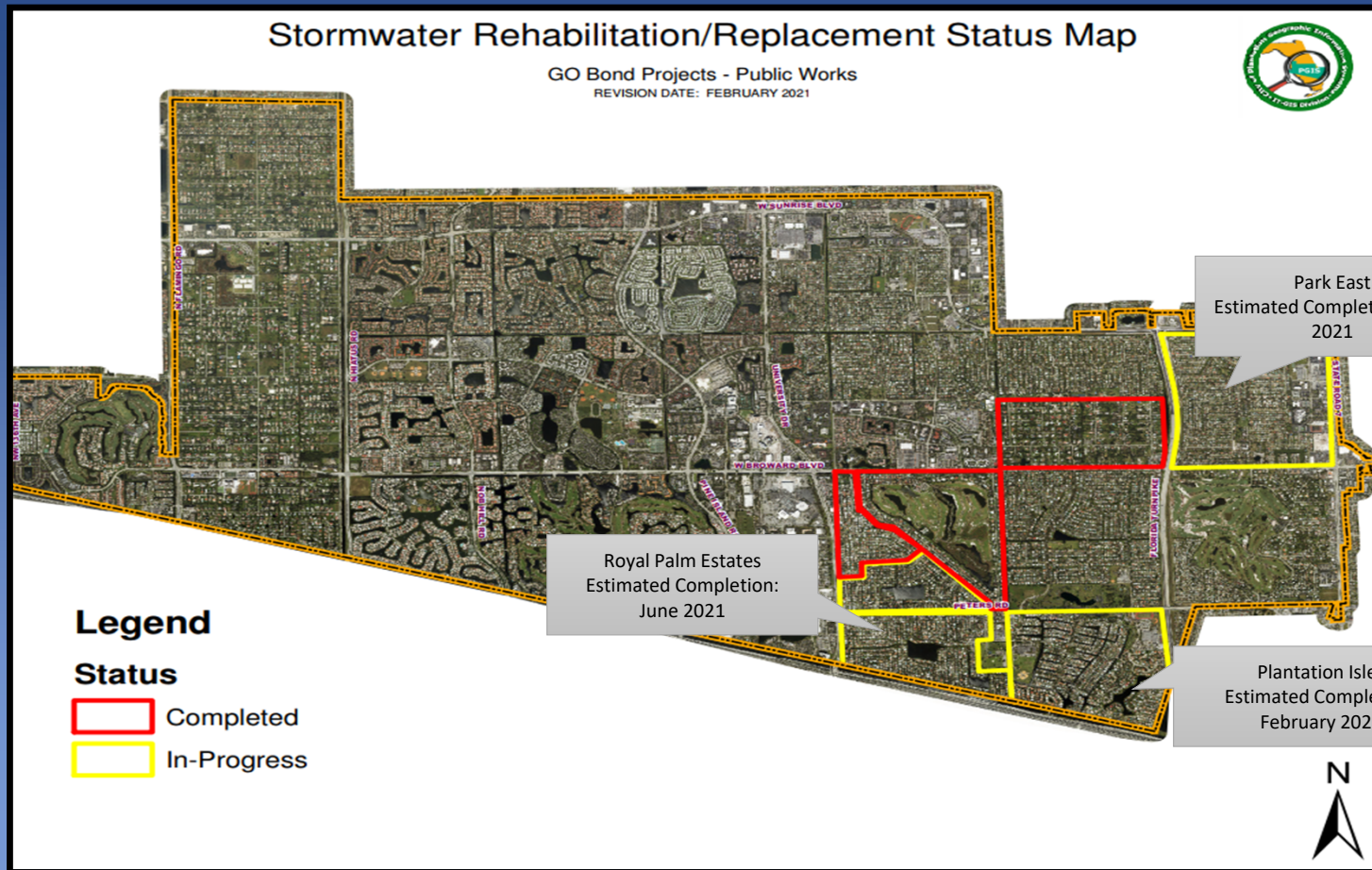
2017 GO Bond Update

Roadway Paving Status



2017 GO Bond Update

Stormwater Rehabilitation & Replacement



2017 GO Bond Update

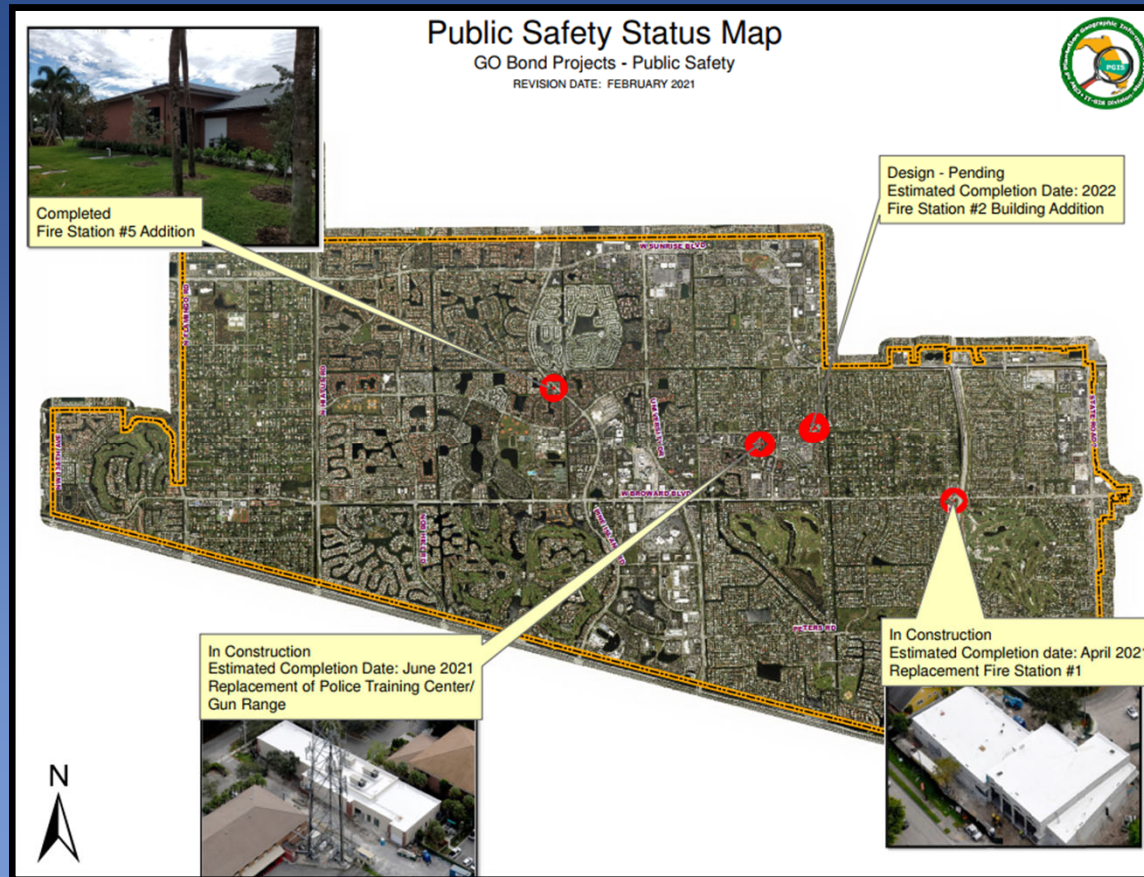
Public Safety



- Replacement of two aerial ladder units ✓
- Replacement of two fire engines ✓
- Replacement of Police Training Center/Gun Range – In Progress
- Replacement of Fire Station #1 – In Progress
- Renovation/Addition to Fire Station #5 ✓
- Renovation/Addition to Fire Station #2 – In Progress

2017 GO Bond Update

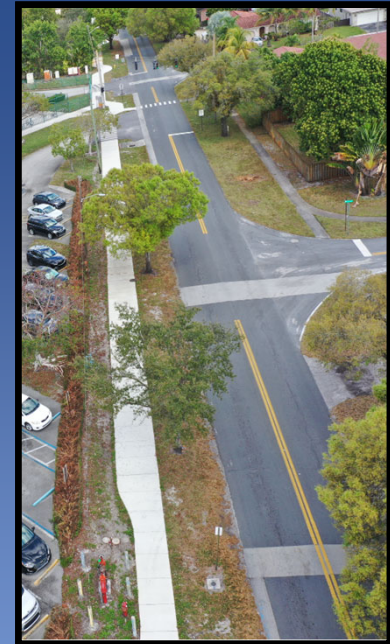
Public Safety



2017 GO Bond Update

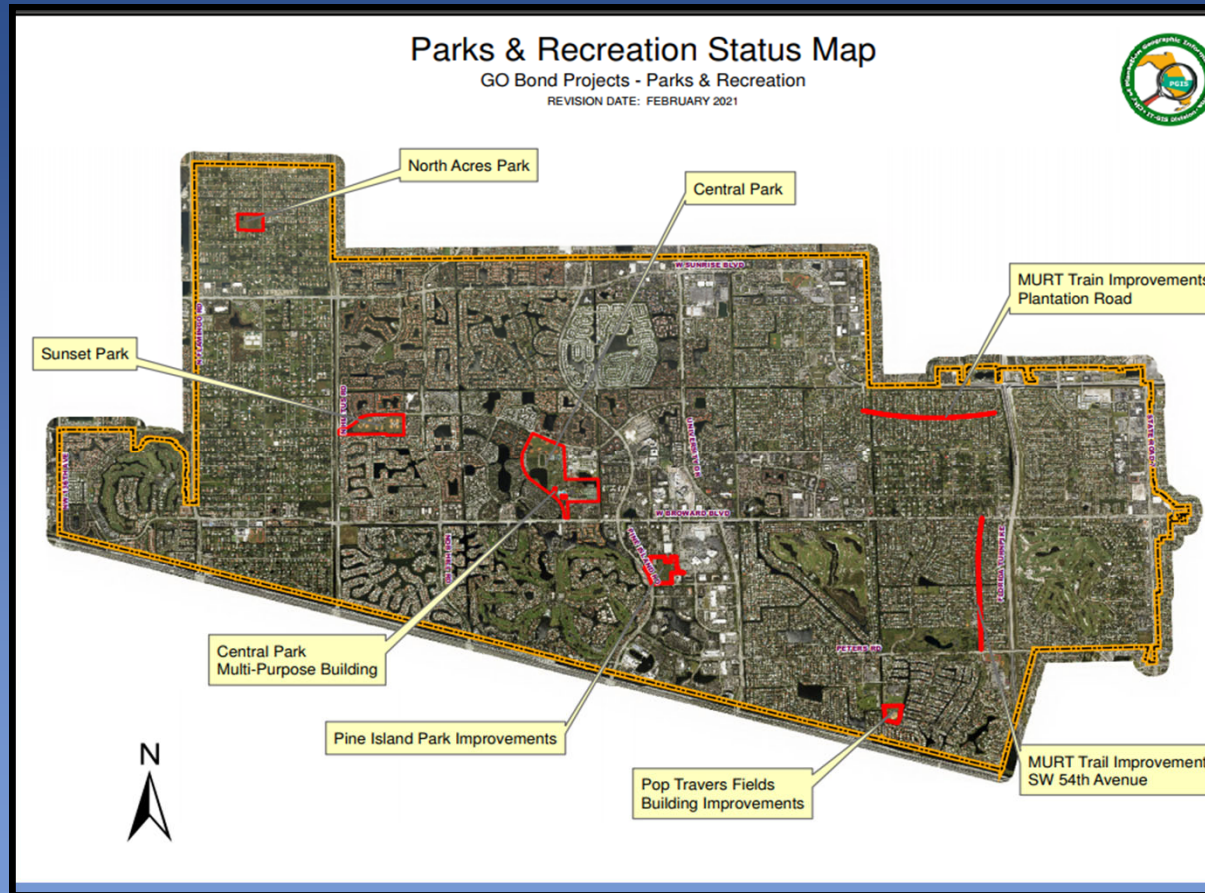
Parks & Recreation

- Central Park & Sunset Park Lighting Replacement ✓
- Pine Island Park Reconstruction – In Progress
- Central Park Multipurpose Building – In Progress
- Renovation to Pop Travers Facility – Concession Building ✓
- Multiuse Recreational Trails (MURTs) ✓
- North Acres Park – In Progress



2017 GO Bond Update

Parks & Recreation



2017 GO Bond Update

Expenditure Snapshot 4/30/21



Category	Silo Allocation	Spent To Date
Public Works & Storm Water	\$28,506,653	\$21,466,394
Public Safety	\$14,104,337	\$11,570,876
Parks & Recreation	\$16,984,800	\$7,047,662
Total	\$59,595,790	\$40,084,932

*Approximately 67% of funds expended/89% Obligated

Non-GO Capital Projects



- Helen B. Hoffman Library Restoration
- Police Department Roof
- Multiple Facility Hardening Projects



Plantation
the grass is greener®

Development Update



Plantation Walk



Former Fashion Mall property

Signed tenants:

- Aetna has moved in and is open for business.
- UFC Fitness
- Mana Poke Restaurant
- Downtown Cigar Bar
- Taco Craft
- Urban Bricks Pizza
- Avalon Nail Spa

Plantation Social/Westfield Broward Mall



Signed tenants:

Repositioning due to
Covid-19

Target substantial
completion 11/21

Proactively plan for the
future of the site

Kaluz Restaurant



- Under Construction
- 10,911 Sq ft restaurant on 1.87 acres
- Indoor and outdoor dining
- Indoor and outdoor lounge/bar area

Plantation Midtown Square



- Former American Express property
- Pine Island and Cleary Boulevard
- 21,000 sq ft of retail/commercial
- 575 units, Two Towers
- One tower under construction
- Pulte under review for 111 Townhomes

Lakeside Apartments

- 600 N Pine Island Road;
adjacent to Lakeside Office
Building
- 271 units
- Under construction
- Close to CO



The Palms at Plantation



- Assisted living facility on S. State Road 7, north of Peters Road
- 130 units
- Construction Imminent

311 Residential/Alexan

- Former DCF property
- 311 to 359 State Road 7
- 1,500 sq ft retail/commercial
- Partial CO
- 248 units



Plantation Pointe

Corner of University Drive
and Sunrise Blvd; former
Motorola property

- 5 Story Tower CO
(Sunshine Health)
- 12 Story Office Tower in
permit review



Chase Bank

Broward & State Road 7
Close to CO



Westside Regional Medical Center

8201 W. Broward Blvd.

- A 87,715 square foot, three-story expansion
- 72 patient rooms and a new entrance lobby on the south side of the building
- Existing semi-private rooms will be converted to private rooms
- CO 11/20



Baptist Health South Florida



1228 Pine Island Road at
Cornerstone

- Broke ground in mid-March
- The facility will include primary care, diagnostic imaging, urgent care, multispecialty surgery, medical oncology, physical therapy and a spine care clinic.
- The new facility is part of Baptist Health's mission to bring high-quality compassionate care to the South Florida community.
- CO 11/20

Additional development

- Camden at Fountains (under construction)
- Amlı Crossroads (under construction)
- Millcreek Cornerstone(CO first building 7/20)
- Millcreek Plantation (Demolition /Permit Review)
- Pollo Tropical (CO)
- Temple Kol A0mi Residential (Building Permits Issued)
- Starbucks/Retail (CO)
- Aldi (pending CO)
- Enclave
- AT&T (Shopping Center)
- 7-11/Mobil (CO)
- Bank of America
- Modesto
- (under construction)
- Townhomes remaining)
- Burger King (CO)
- Broadstone (CO)
- WaWa (CO and pending)
- Ross (Steinmart Plaza)
- Sunrise Logistics (Former Sears site in Industrial Park)

Over \$1 billion in projected development value!
Over \$1.2 billion estimated improved value!

Development Challenges Ahead



- Covid-19 Recovery & Reorientation of Markets
- Attainable Housing
- Traffic
- Resiliency



Plantation
the grass is greener®

Traffic Update



Traffic: No Quick Fix

- Midtown Bridge
 - Partnership w/ Plantation Midtown Development District (initial funding for PD&E \$700k)
- Partnership with MPO
 - Multimodal Transportation Master Plan
 - MTECC
- County Surtax Program
 - R&M Existing Roadways
 - Shuttle Program

Midtown Bridge

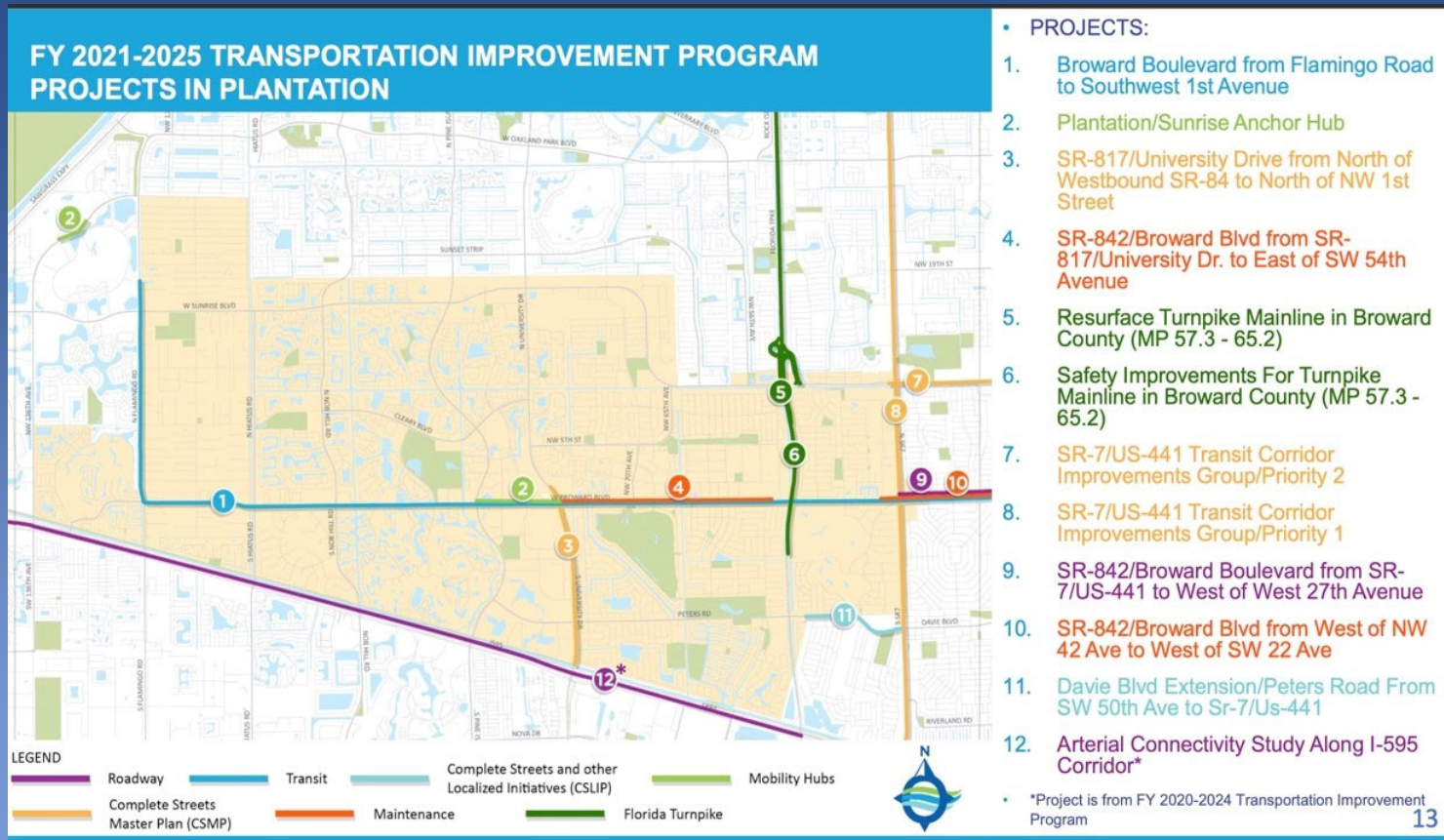
University Drive Corridor Concepts

» City of Plantation proposed Midtown Bridge

- Can reduce traffic on University Drive and Pine Island Road
- 2045 total AADT on both roads: 168,500
- Can reduce AADT by 17,000
- 10% reduction



Traffic: TIP Projects



F05 Pine Island Rd Fiber Optic Network

Oakland Park Blvd to McNab Rd

Lauderhill, Tamarac, Sunrise

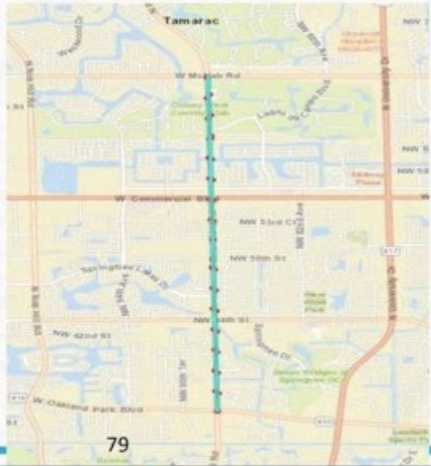
Install fiber optic cables and associated equipment to support new traffic technology with high data volume and speed requirement.

Schedule:

Original Surtax Plan – 2022
 Current Construction Start – 2021
 Reasons for Change – Project was approved in FY2020 and design is currently underway.

Capital Cost Estimate:

Current Capital Cost – \$1,419,453
 Original Surtax Plan – \$1,521,817
 Reasons for Change – Cost updated to current schedule



79

A03 University Drive Adaptive Signals

Stirling Rd to Sunrise Blvd

Davie, Plantation

Implement Adaptive Traffic Signal Technology on University Drive. Portion of this project will be constructed as part of another FDOT project in the same area.

Schedule:

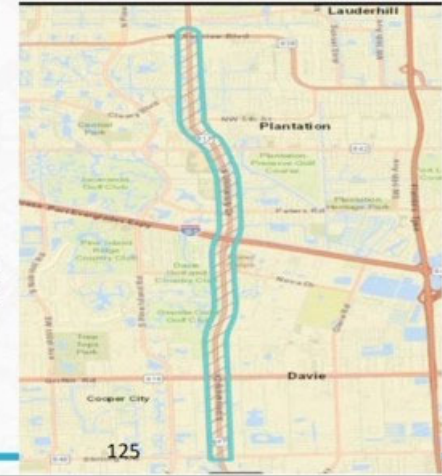
Original Surtax Plan – 2023
 Current Construction Start – 2021
 Reasons for Change – Project was approved in FY2020 and design is currently underway.

Capital Cost Estimate:

Current Capital Cost – \$3,716,240
 Original Surtax Plan – \$2,424,805
 Reasons for Change – Adaptive signal control is a new technology that has continued to evolve since original plan was prepared. Certain equipment (add'l vehicle detection, new signal controller cabinets, etc.), now determined as necessary for optimal operation, was not included in original cost estimate.

FY2021 Budget Request:


\$3,089,872 for Construction



125

Traffic: Adaptive Lighting


MTECC: Turnkey Procurement





MTECC
METRO
TRANSPORTATION
ENGINEERING &
CONSTRUCTION
COOPERATIVE


Contact Us
(954) 876-0033 Office
Trade Centre South
100 West Cypress Creek Road, 6th
Floor, Suite 650
Fort Lauderdale, FL 33309-2181








ALLOW US TO DO THE **HEAVY LIFT** BY PROVIDING
CENTRALIZATION OF **SERVICES** AND **RESOURCES**


Increase efficiency by
streamlining services,
through current MPO
relationships


We can help with the
Federal and State
(LAP) paperwork and
project process


Assistance through all
stages of the project:
Procurement, Design,
and Construction

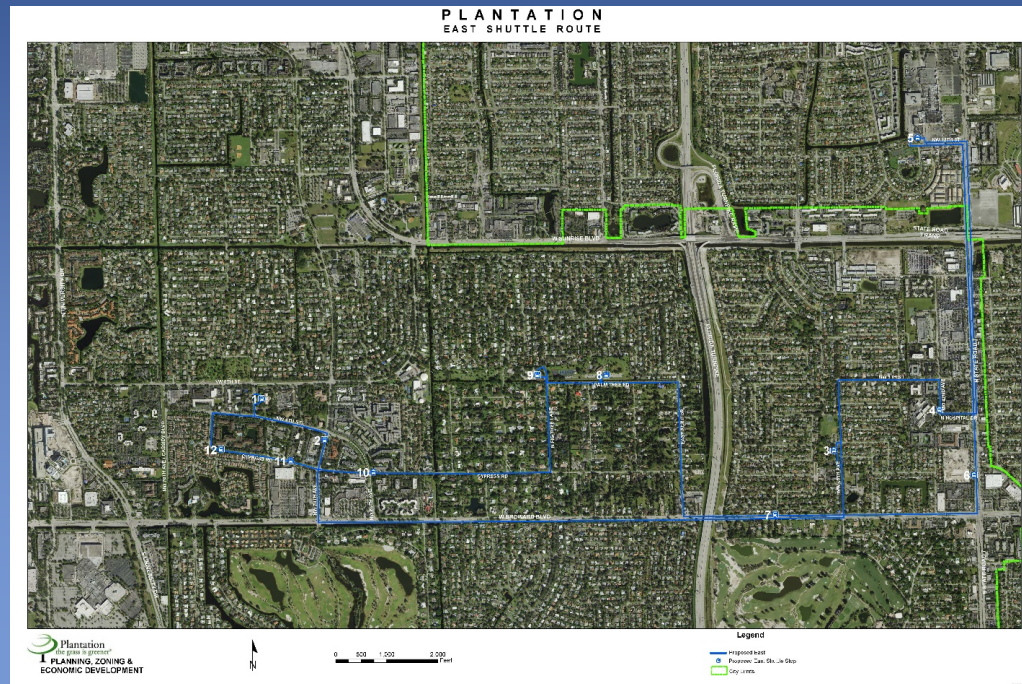
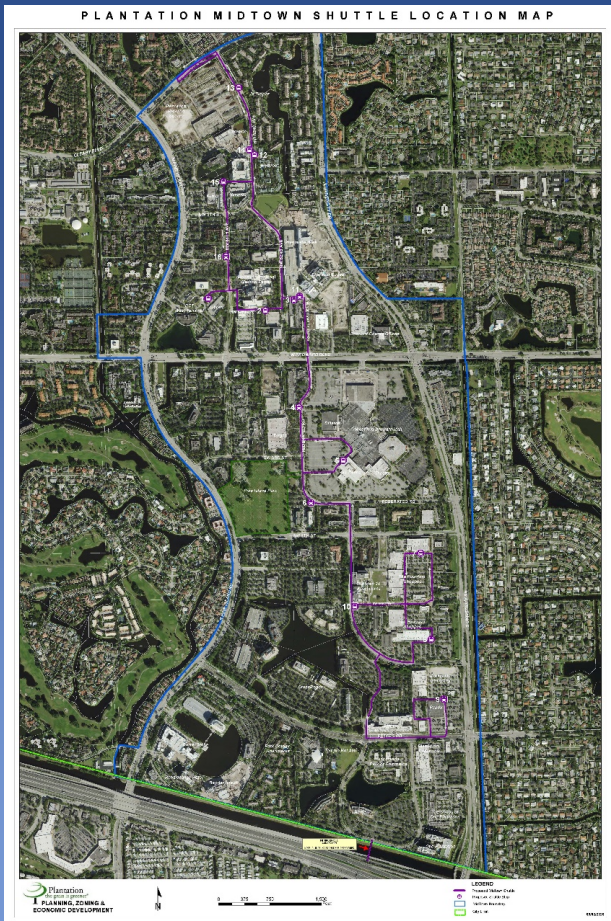


 **PLAN**   **FUND**   **CONSTRUCT**   **ENJOY**

- Complements our centralized procurement
- Turnkey resources to expedite projects
- Provides expertise to ensure compliance (e.g., LAP Certification)

Shuttle Service

Funded through Surtax



Coming Up...



- May 12th FY22 Budget Workshop
- May 26th Form of Governance Workshop
- September 8th First Budget Hearing
- September 17th Second/Final Budget Hearing

<https://www.plantation.org/>



Plantation
the grass is greener™

Thank you, get your
vaccination, be safe!

