

Appendix A

Concept Plans



CONTRACT PLANS COMPONENTS

- ROADWAY PLANS
- SIGNING AND PAVEMENT MARKING PLANS
- SIGNALIZATION PLANS
- LIGHTING PLANS
- LANDSCAPE PLANS
- STRUCTURE PLANS

A DETAILED INDEX APPEARS ON THE KEY SHEET OF EACH COMPONENT

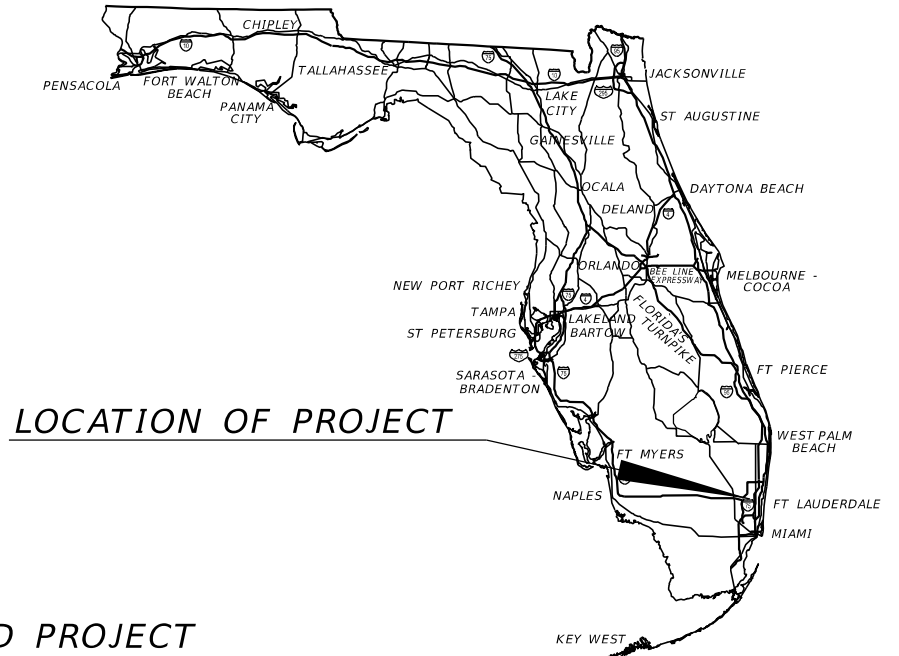
INDEX OF ROADWAY PLANS

SHEET NO.	SHEET DESCRIPTION
1	KEY SHEET
2 - 4	TYPICAL SECTIONS
5	ROADWAY PLAN
6 - 8	PROFILES
9 - 11	TRAFFIC CONTROL TYPICAL SECTIONS

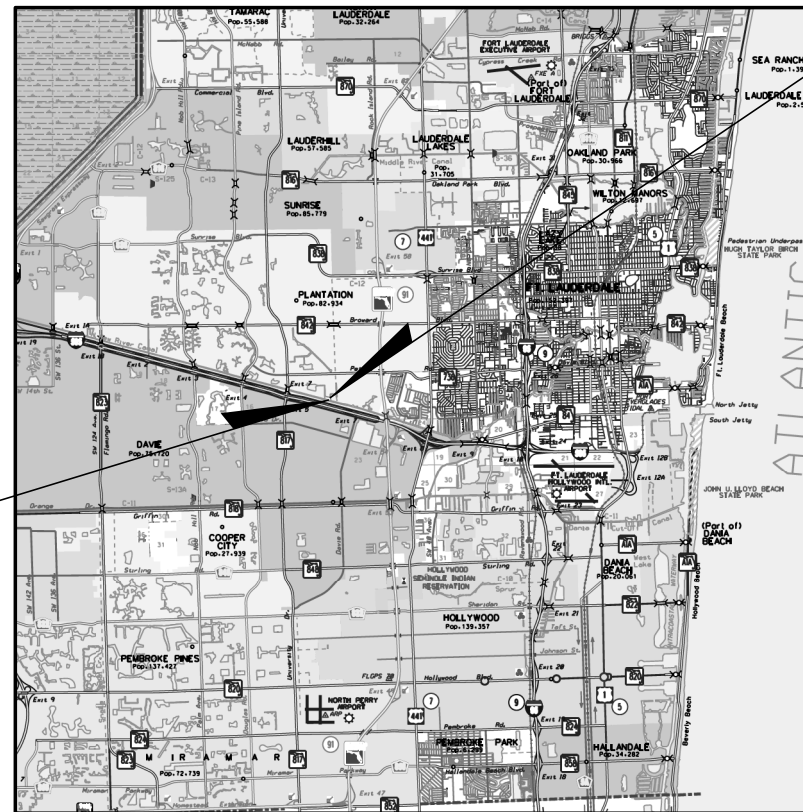
STATE OF FLORIDA
DEPARTMENT OF TRANSPORTATION

CONTRACT PLANS

FINANCIAL PROJECT ID 448884-1-22-01
(FEDERAL FUNDS)
COUNTY (BROWARD)
MIDTOWN BRIDGE



LOCATION OF PROJECT



**END PROJECT
STA. 12+89.71**

**BEGIN PROJECT
STA. 10+00.00**

30 % PLANS

GOVERNING STANDARD PLANS:

Florida Department of Transportation, FY2023-24 Standard Plans for Road and Bridge Construction and applicable Interim Revisions (IRs).

Standard Plans for Road Construction and associated IRs are available at the following website: <http://www.fdot.gov/design/standardplans>

APPLICABLE IRs: IR - -

Standard Plans for Bridge Construction are included in the Structures Plans Component

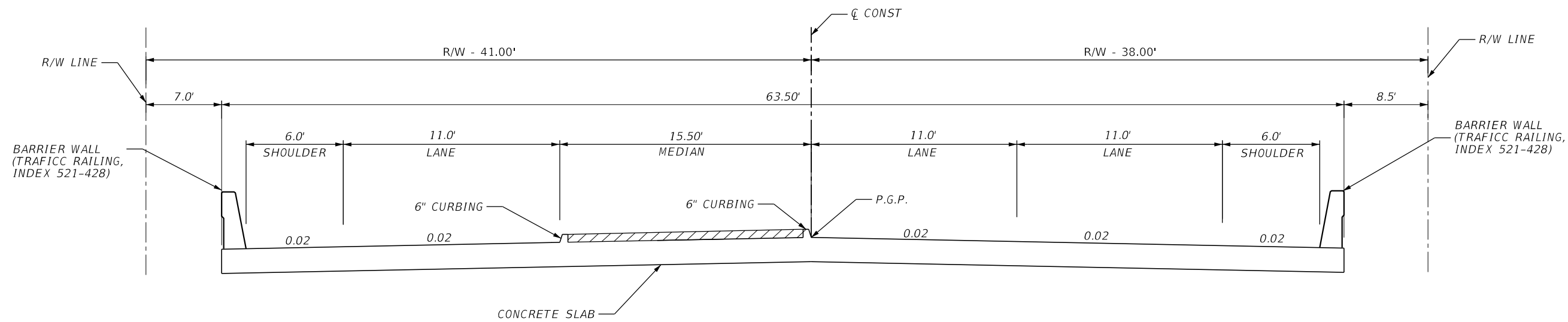
GOVERNING STANDARD SPECIFICATIONS:

Florida Department of Transportation, JULY 2023 Standard Specifications for Road and Bridge Construction at the following website: <http://www.fdot.gov/programmanagement/Implemented/SpecBooks>

**ROADWAY PLANS
ENGINEER OF RECORD:**

BETSY JEFFERS, P.E.
P.E. LICENSE NUMBER 50745
MARLIN ENGINEERING
3363 W. COMMERCIAL BLVD.
FORT LAUDERDALE, FL 33309

CONSTRUCTION CONTRACT NO.	FISCAL YEAR	SHEET NO.
TBD	23	1



TYPICAL SECTION
MIDTOWN BRIDGE
STA. 10+30.00 TO STA. 12+15.00

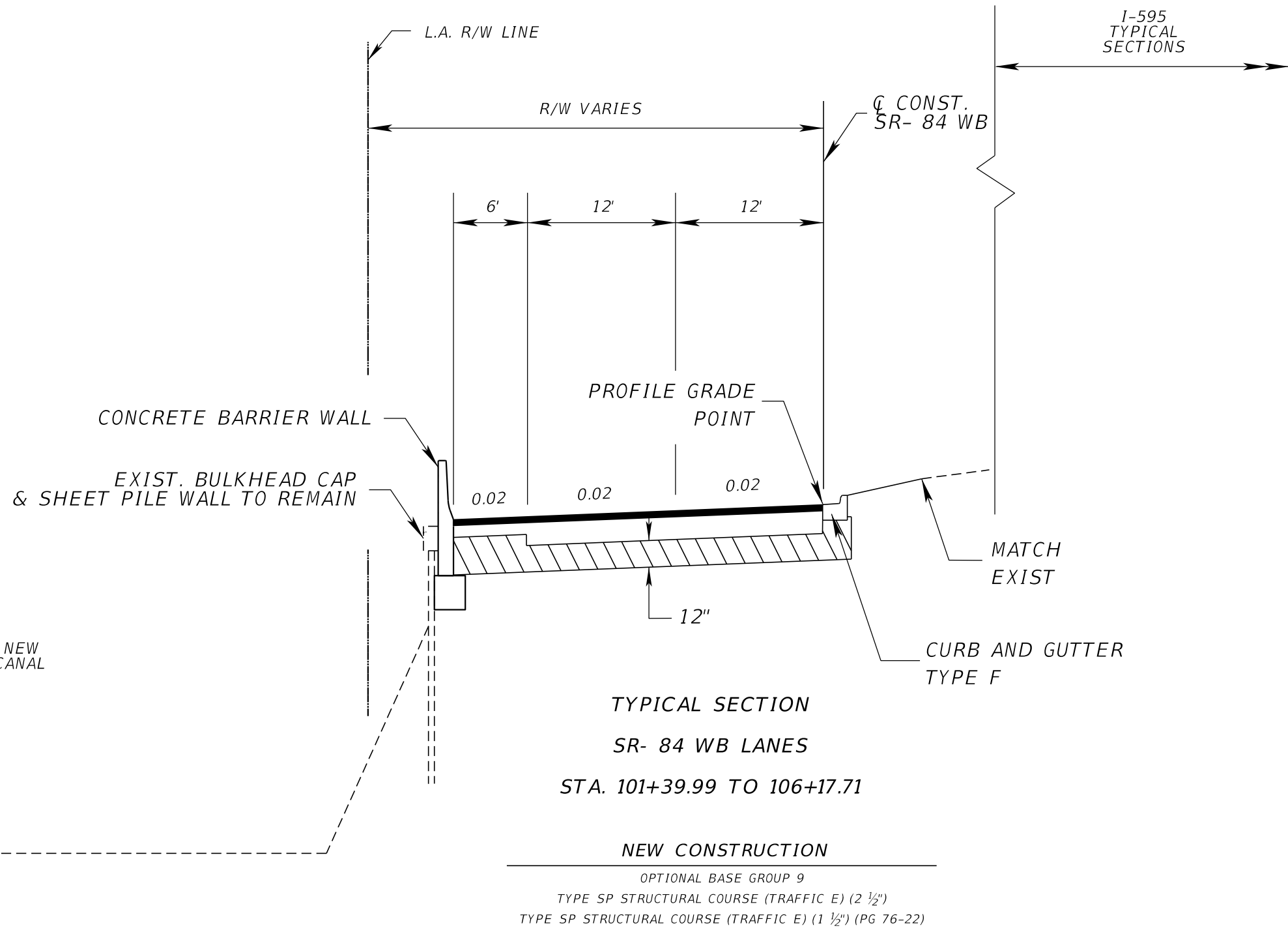
TRAFFIC DATA

CURRENT YEAR = 2022 AADT = NA
ESTIMATED OPENING YEAR = 2025 AADT = NA
ESTIMATED DESIGN YEAR = 2045 AADT = 19000
DESIGN SPEED = 30 MPH

4/21/2022 3:30:36 PM yso.ca C:\Users\ysoca\Documents\My Projects\Plantation Bridge\Concepts\Roadway\TYP\SRD03.dgn

THE OFFICIAL RECORD OF THIS SHEET IS THE ELECTRONIC FILE DIGITALLY SIGNED AND SEALED UNDER RULE 61G15-23.004, F.A.C.

REVISIONS				ENGINEER OF RECORD		STATE OF FLORIDA DEPARTMENT OF TRANSPORTATION			SHEET NO.
DATE	DESCRIPTION	DATE	DESCRIPTION	BETSY JEFFERS, P.E. LICENSE NUMBER 50745 MARLIN ENGINEERING, INC. 3363 WEST COMMERCIAL BLVD., SUITE 115, FORT LAUDERDALE, FL 33309		ROAD NO.	COUNTY	FINANCIAL PROJECT ID	
							BROWARD	448848-1-22-01	TYPICAL SECTIONS 2



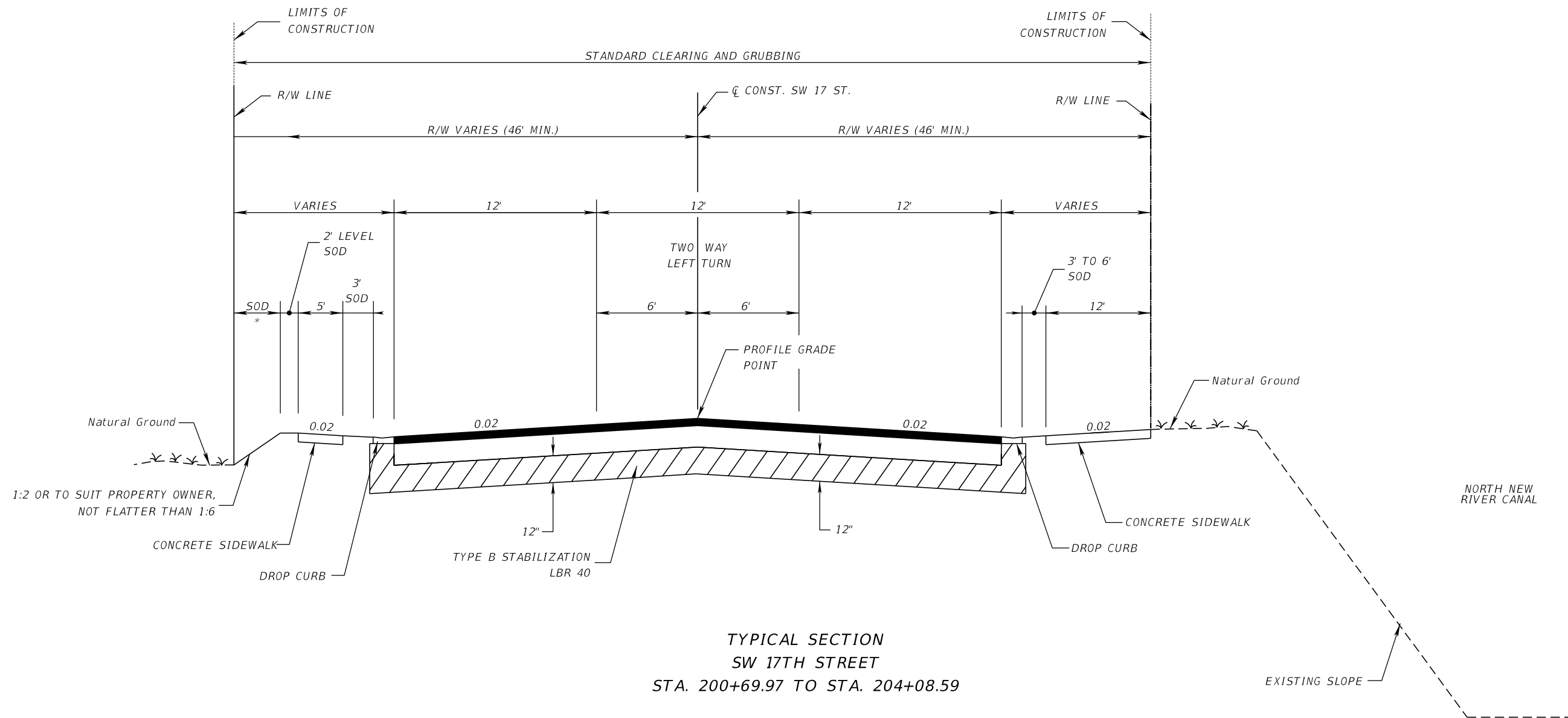
TRAFFIC DATA

CURRENT YEAR = 2022 AADT = 23000
 ESTIMATED OPENING YEAR = 2025 AADT = 23500
 ESTIMATED DESIGN YEAR = 2045 AADT = 34500
 DESIGN SPEED = 45 MPH

4/21/2022 3:30:36 PM ysoca C:\Users\ysoca\Documents\My Projects\Plantation Bridge\Concepts\Roadway\TYPERS03.dgn

THE OFFICIAL RECORD OF THIS SHEET IS THE ELECTRONIC FILE DIGITALLY SIGNED AND SEALED UNDER RULE 61G15-23.004, F.A.C.

REVISIONS				ENGINEER OF RECORD		STATE OF FLORIDA DEPARTMENT OF TRANSPORTATION			SHEET NO.
DATE	DESCRIPTION	DATE	DESCRIPTION	BETSY JEFFERS, P.E. LICENSE NUMBER 50745 MARLIN ENGINEERING, INC. 3363 WEST COMMERCIAL BLVD., SUITE 115, FORT LAUDERDALE, FL 33309		ROAD NO.	COUNTY	FINANCIAL PROJECT ID	
									BROWARD



TYPICAL SECTION
SW 17TH STREET
STA. 200+69.97 TO STA. 204+08.59

NEW CONSTRUCTION

OPTIONAL BASE GROUP 6
TYPE SP STRUCTURAL COURSE (TRAFFIC B) (1") (PG 76-22)
FRICTION COURSE FC- 9.5 (TRAFFIC B) (1") (PG 76-22)

TRAFFIC DATA

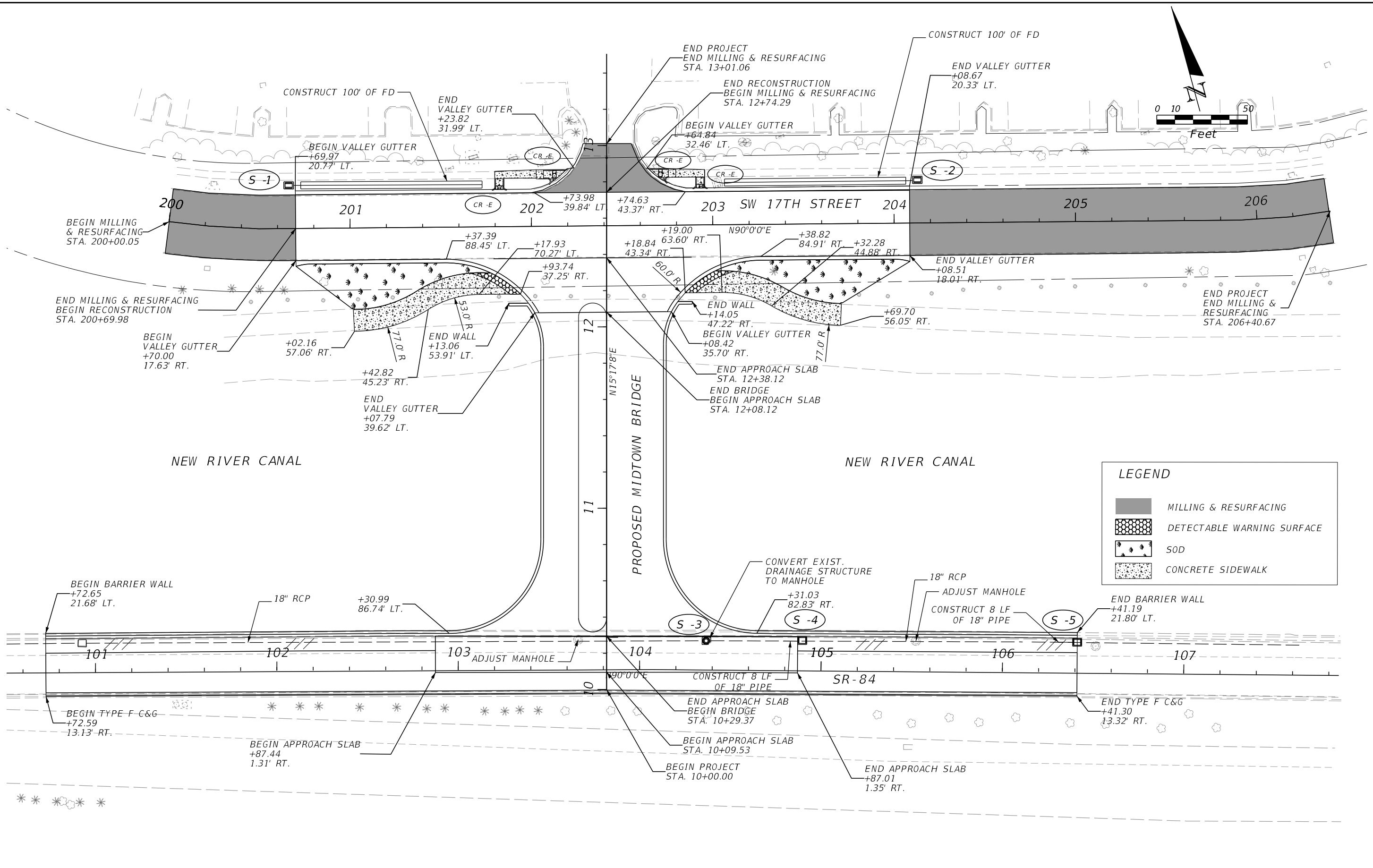
CURRENT YEAR = 2022 AADT = 200
ESTIMATED OPENING YEAR = 2025 AADT = 234
ESTIMATED DESIGN YEAR = 2045 AADT = 9900
DESIGN SPEED = 30 MPH

4/21/2022 3:30:36 PM ysooca C:\Users\ysoca\Documents\My Projects\Plantation Bridge\Concepts\Roadway\TYP5R003.dgn

THE OFFICIAL RECORD OF THIS SHEET IS THE ELECTRONIC FILE DIGITALLY SIGNED AND SEALED UNDER RULE 61G15-23.004, F.A.C.

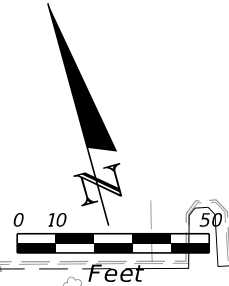
REVISIONS				ENGINEER OF RECORD		STATE OF FLORIDA DEPARTMENT OF TRANSPORTATION			SHEET NO.
DATE	DESCRIPTION	DATE	DESCRIPTION	BETSY JEFFERS, P.E. LICENSE NUMBER 50745 MARLIN ENGINEERING, INC. 3363 WEST COMMERCIAL BLVD., SUITE 115, FORT LAUDERDALE, FL 33309		ROAD NO.	COUNTY	FINANCIAL PROJECT ID	
TYPICAL SECTIONS									4

4/21/2022 3:30:37 PM ysoca
 C:\Users\ysoca\Documents\My Projects\Plantation Bridge\Concepts\Roadway\PLANRD02.dgn



LEGEND

- MILLING & RESURFACING
- DETECTABLE WARNING SURFACE
- SOD
- CONCRETE SIDEWALK

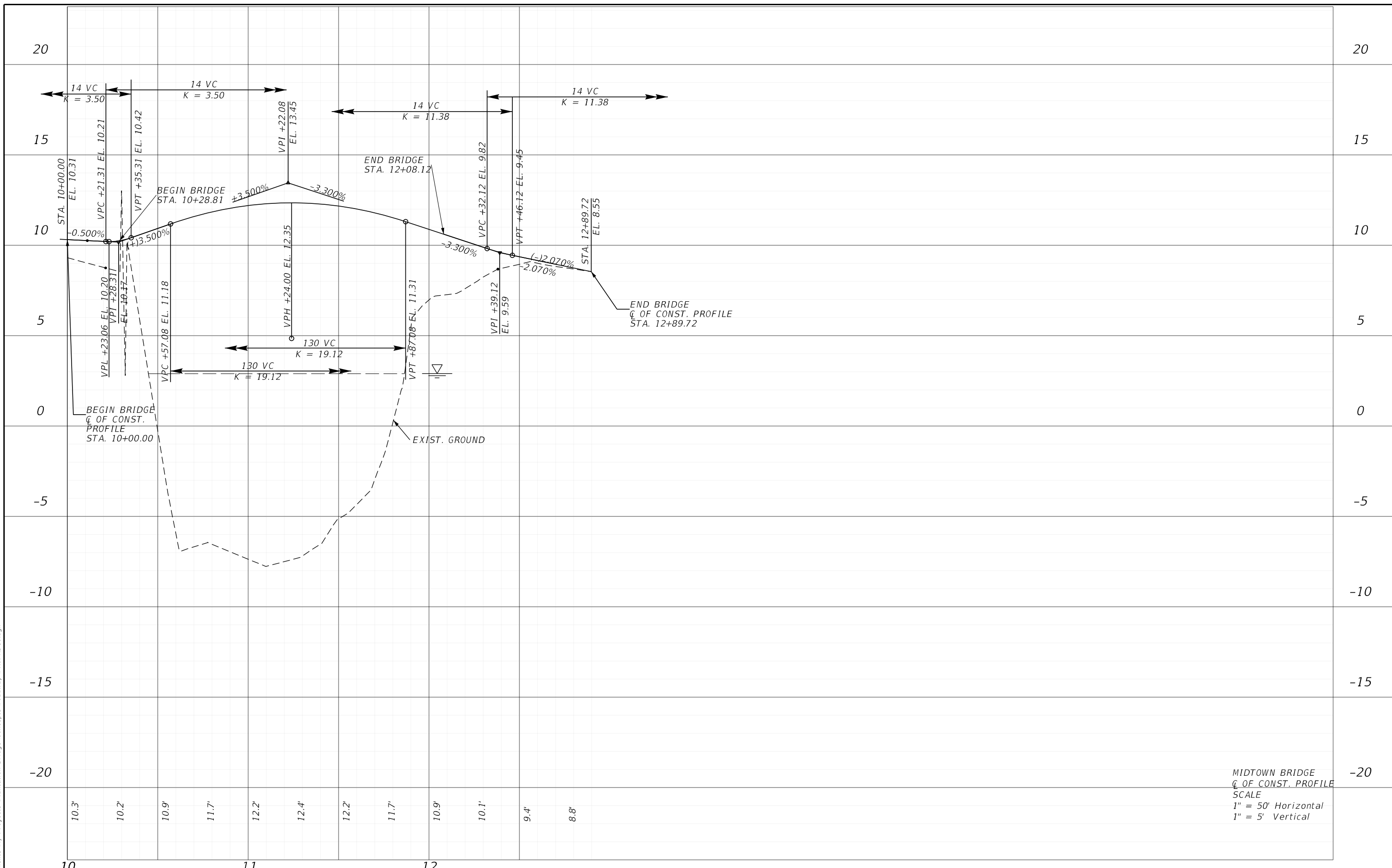


REVISIONS				ENGINEER OF RECORD		STATE OF FLORIDA DEPARTMENT OF TRANSPORTATION			SHEET NO.
DATE	DESCRIPTION	DATE	DESCRIPTION	BETSY JEFFERS, P.E. LICENSE NUMBER 50745 MARLIN ENGINEERING, INC. 3363 WEST COMMERCIAL BLVD., SUITE 115, FORT LAUDERDALE, FL 33309		ROAD NO.	COUNTY	FINANCIAL PROJECT ID	
							BROWARD	448884-1-22-01	5

ROADWAY PLAN

THE OFFICIAL RECORD OF THIS SHEET IS THE ELECTRONIC FILE DIGITALLY SIGNED AND SEALED UNDER RULE 61G15-23.004, F.A.C.

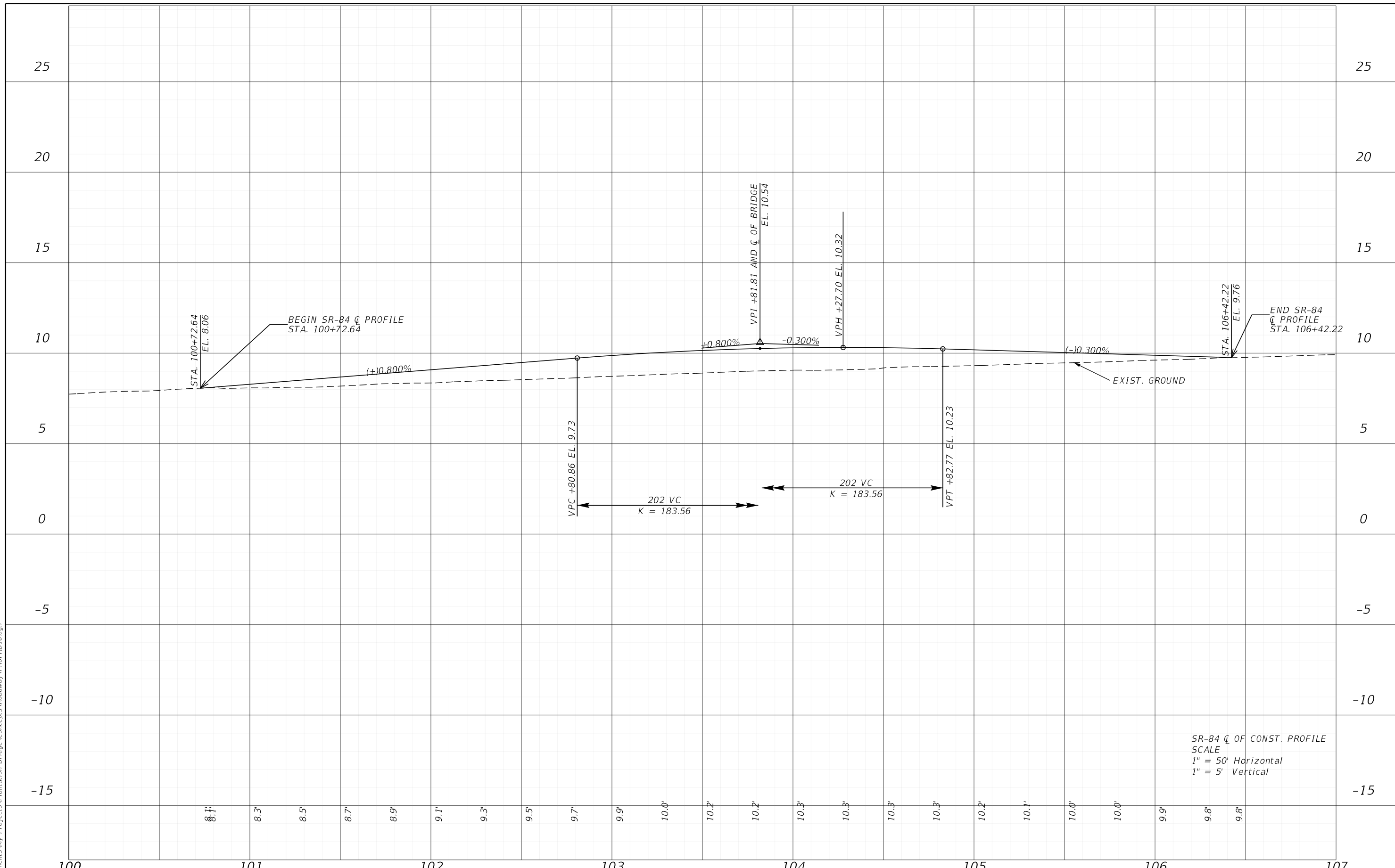
4/21/2022 3:30:38 PM ysoca
 C:\Users\ysoca\Documents\My Projects\Plantation Bridge\Concepts\Roadway\PROFR10.dgn



REVISIONS				ENGINEER OF RECORD	STATE OF FLORIDA DEPARTMENT OF TRANSPORTATION			SHEET NO.
DATE	DESCRIPTION	DATE	DESCRIPTION	BETSY JEFFERS, P.E. LICENSE NUMBER 50745 MARLIN ENGINEERING, INC. 3363 WEST COMMERCIAL BLVD., SUITE 115, FORT LAUDERDALE, FL 33309	ROAD NO.	COUNTY	FINANCIAL PROJECT ID	
						BROWARD	448884-1-22-01	6

THE OFFICIAL RECORD OF THIS SHEET IS THE ELECTRONIC FILE DIGITALLY SIGNED AND SEALED UNDER RULE 61G15-23.004, F.A.C.

4/21/2022 3:30:38 PM ysoca
 C:\Users\ysoca\Documents\My Projects\Plantation Bridge\Concepts\Roadway\PROFRD10.dgn



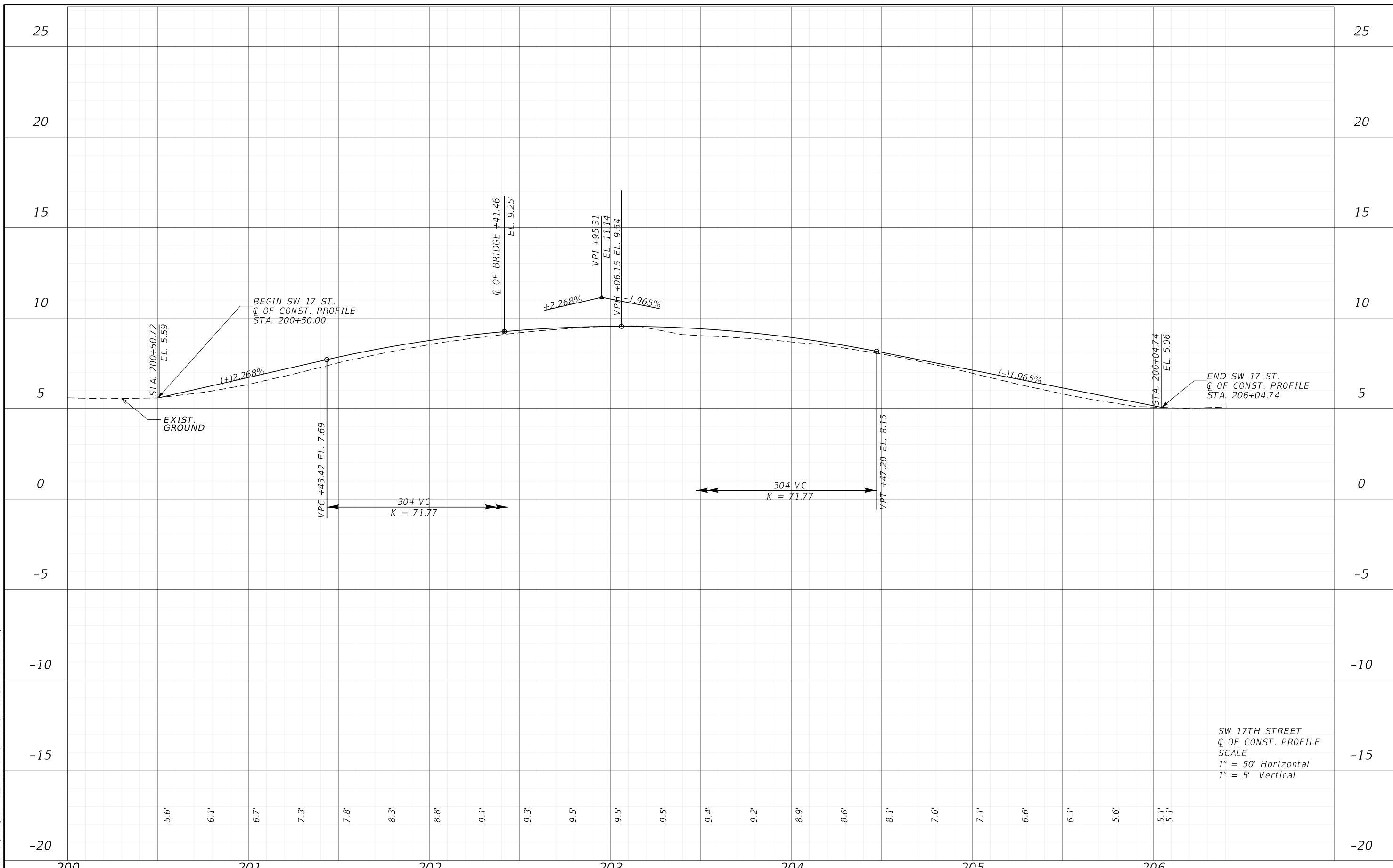
SR-84 C OF CONST. PROFILE
 SCALE
 1" = 50' Horizontal
 1" = 5' Vertical

DATE		DESCRIPTION		ENGINEER OF RECORD		STATE OF FLORIDA DEPARTMENT OF TRANSPORTATION			SHEET NO.
DATE	DESCRIPTION	DATE	DESCRIPTION			ROAD NO.	COUNTY	FINANCIAL PROJECT ID	
				BETSY JEFFERS, P.E. LICENSE NUMBER 50745 MARLIN ENGINEERING, INC. 3363 WEST COMMERCIAL BLVD., SUITE 115, FORT LAUDERDALE, FL 33309			BROWARD	448884-1-22-01	7

PROFILE SHEETS

THE OFFICIAL RECORD OF THIS SHEET IS THE ELECTRONIC FILE DIGITALLY SIGNED AND SEALED UNDER RULE 61G15-23.004, F.A.C.

4/21/2022 3:30:38 PM ysoca
 C:\Users\ysoca\Documents\My Projects\Plantation Bridge\Concepts\Roadway\PROFR10.dgn

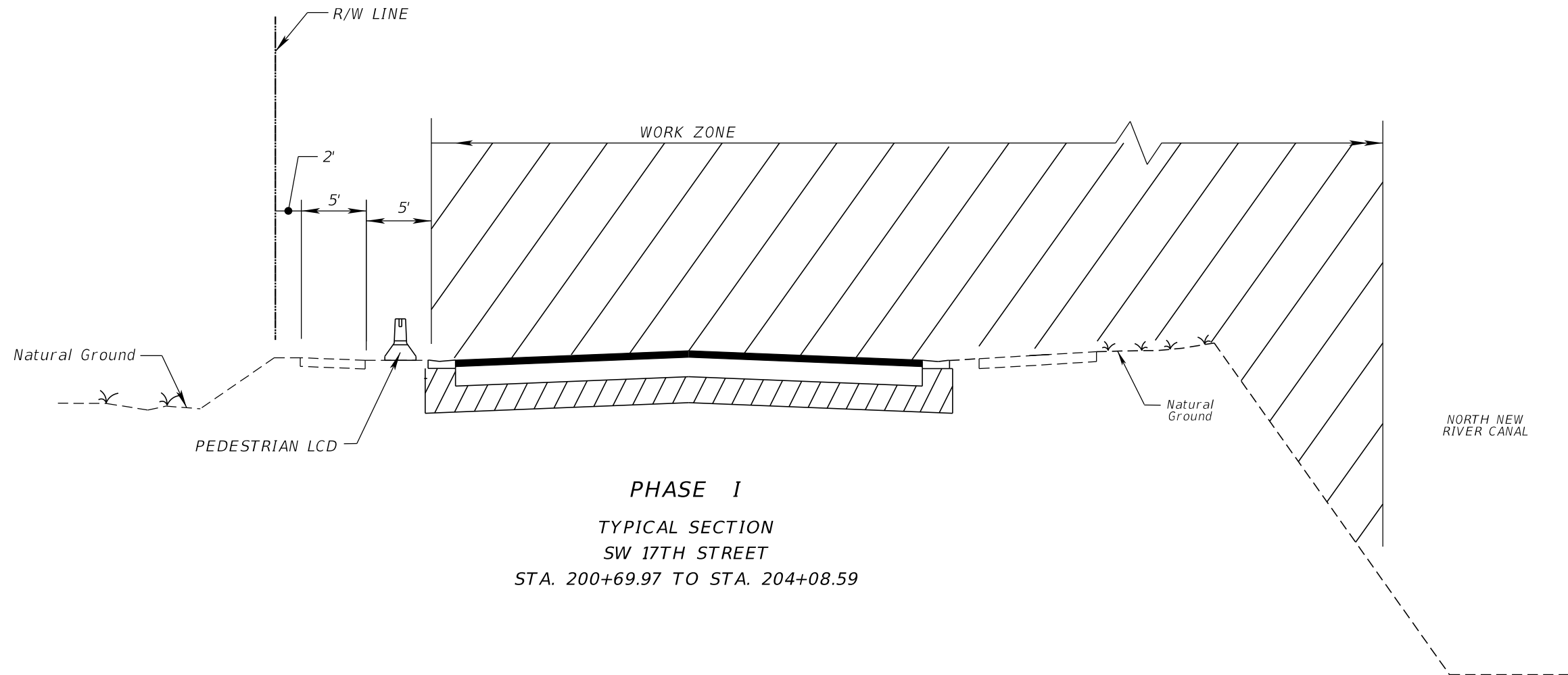


SW 17TH STREET
 C. OF CONST. PROFILE
 SCALE
 1" = 50' Horizontal
 1" = 5' Vertical

DATE		DESCRIPTION		ENGINEER OF RECORD		STATE OF FLORIDA DEPARTMENT OF TRANSPORTATION			SHEET NO.
DATE	DESCRIPTION	DATE	DESCRIPTION	ROAD NO.	COUNTY	FINANCIAL PROJECT ID			
				BETSY JEFFERS, P.E. LICENSE NUMBER 50745 MARLIN ENGINEERING, INC. 3363 WEST COMMERCIAL BLVD., SUITE 115, FORT LAUDERDALE, FL 33309		BROWARD	448884-1-22-01		8

PROFILE SHEETS

THE OFFICIAL RECORD OF THIS SHEET IS THE ELECTRONIC FILE DIGITALLY SIGNED AND SEALED UNDER RULE 61G15-23.004, F.A.C.



PHASE I
TYPICAL SECTION
SW 17TH STREET
STA. 200+69.97 TO STA. 204+08.59

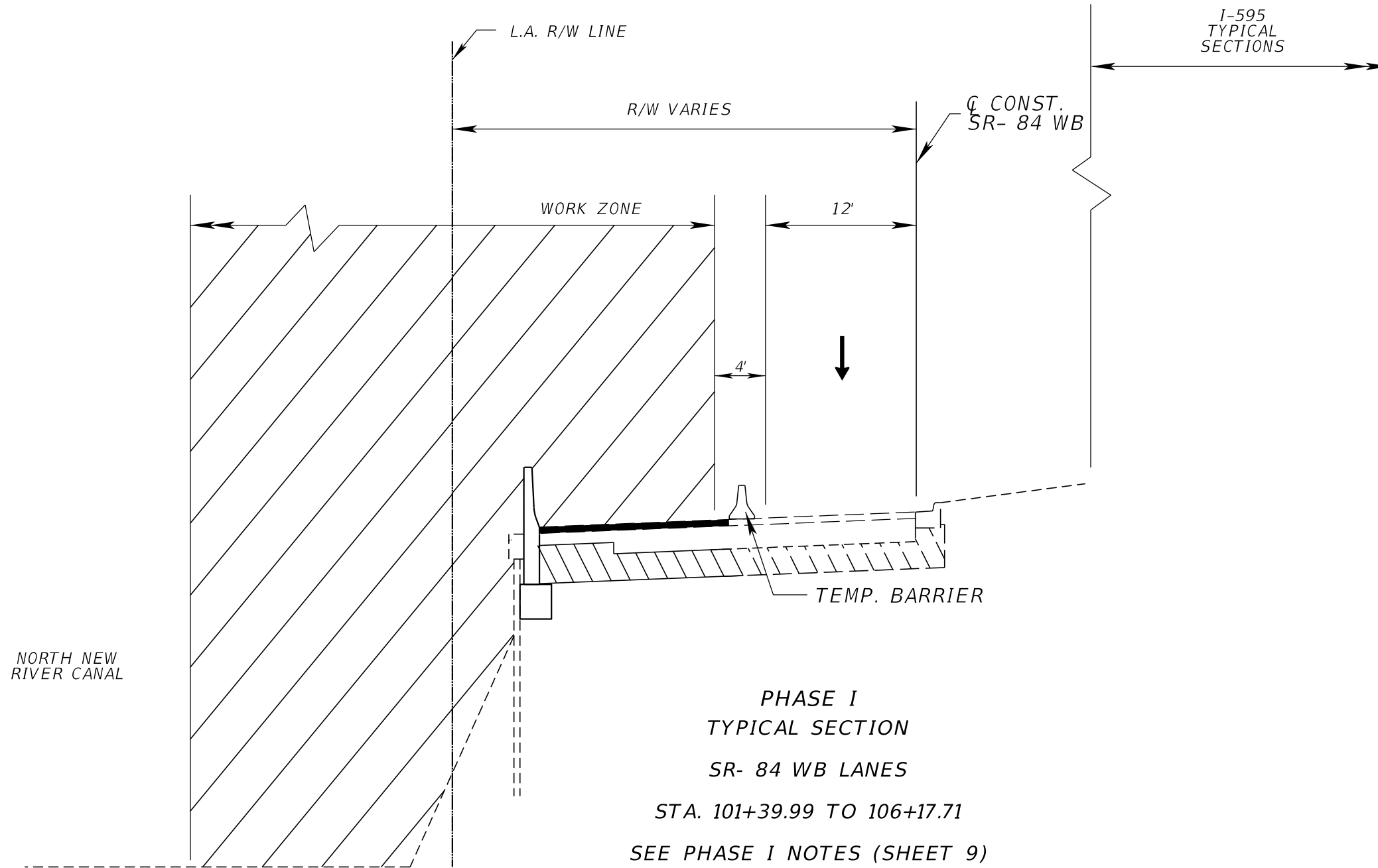
PHASE I NOTES:

- 1- CLOSE ALL LANES ON SW 17 STREET AND OUTSIDE LANE ON SR-84. INSTALL TRAFFIC CONTROL SIGN AND DEVICES AS PER FDOT STANDARD PLANS : 102-100, 102-600, 102-613, AND 102-625
- 2- BEGIN CONSTRUCTION OF BRIDGE, DRAINAGE IMPROVEMENTS AND RECONSTRUCTION OF SR-84 OUTSIDE LANE AND SHOULDER.
- 3- BEGIN ROADWAY RECONSTRUCTION WORK ON SW 17 STREET AND SIDEWALK ON THE SOUTH SIDE. DETOUR PEDESTRIAN TRAFFIC TO THE SIDEWALK ON THE NORTH SIDE OF THE ROAD.

4/21/2022 3:30:38 PM ysooca C:\Users\ysooca\Documents\My Projects\Plantation Bridge\Concepts\Roadway\TYP5R003.dgn

THE OFFICIAL RECORD OF THIS SHEET IS THE ELECTRONIC FILE DIGITALLY SIGNED AND SEALED UNDER RULE 61G15-23.004, F.A.C.

REVISIONS				ENGINEER OF RECORD		STATE OF FLORIDA DEPARTMENT OF TRANSPORTATION			TRAFFIC CONTROL TYPICAL SECTIONS	SHEET NO.
DATE	DESCRIPTION	DATE	DESCRIPTION	BETSY JEFFERS, P.E. LICENSE NUMBER 50745 MARLIN ENGINEERING, INC. 3363 WEST COMMERCIAL BLVD., SUITE 115, FORT LAUDERDALE, FL 33309		ROAD NO.	COUNTY	FINANCIAL PROJECT ID		9
										BROWARD

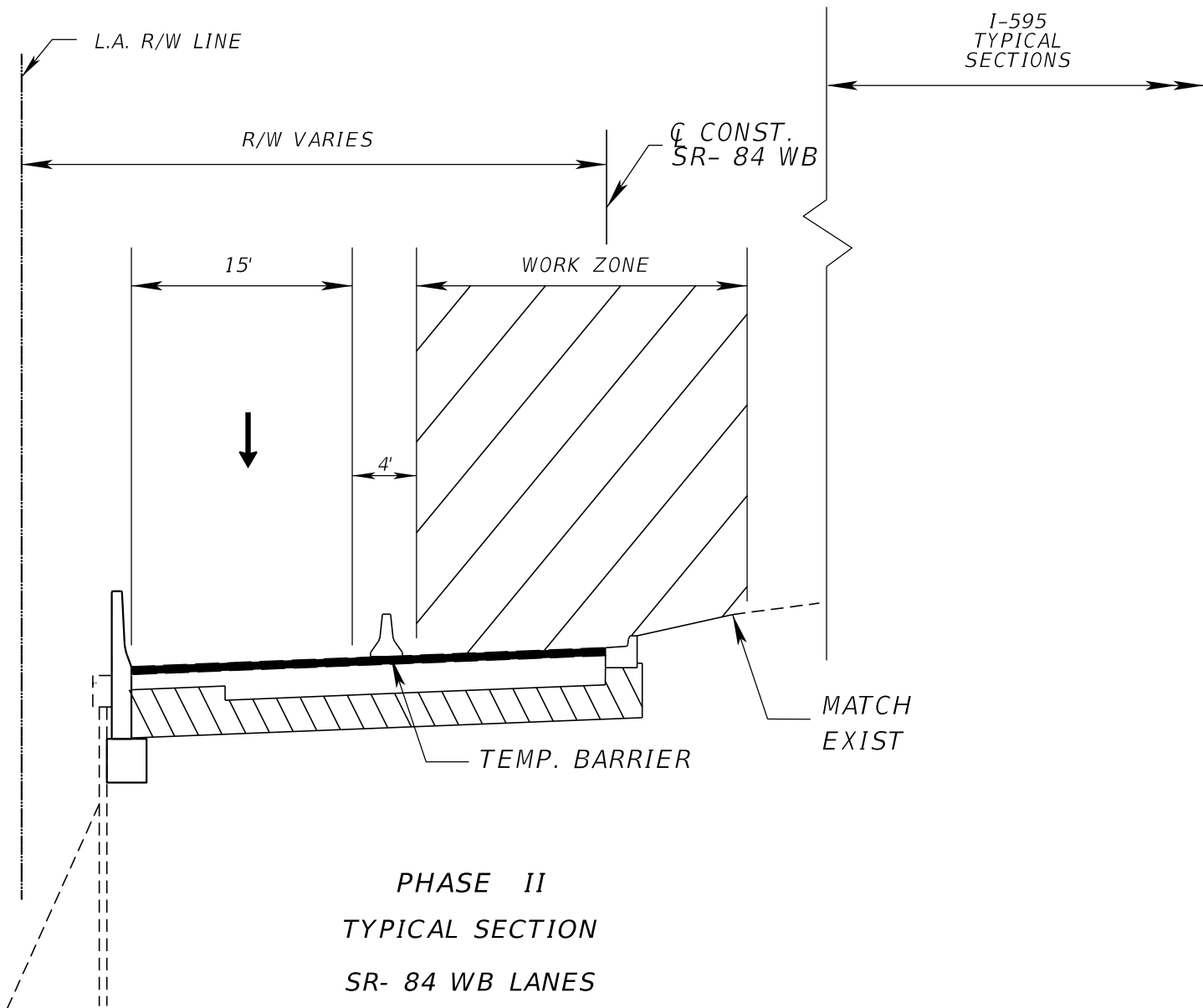


4/21/2022 3:30:39 PM ysooca
 C:\Users\ysooca\Documents\My Projects\Plantation Bridge\Concepts\Roadway\TYP SR03.dgn

THE OFFICIAL RECORD OF THIS SHEET IS THE ELECTRONIC FILE DIGITALLY SIGNED AND SEALED UNDER RULE 61G15-23.004, F.A.C.

REVISIONS				ENGINEER OF RECORD		STATE OF FLORIDA DEPARTMENT OF TRANSPORTATION			TRAFFIC CONTROL TYPICAL SECTIONS	SHEET NO.
DATE	DESCRIPTION	DATE	DESCRIPTION	BETSY JEFFERS, P.E. LICENSE NUMBER 50745 MARLIN ENGINEERING, INC. 3363 WEST COMMERCIAL BLVD., SUITE 115, FORT LAUDERDALE, FL 33309		ROAD NO.	COUNTY	FINANCIAL PROJECT ID		10
							BROWARD	448884-1-22-01		

NORTH NEW RIVER CANAL



**PHASE II
TYPICAL SECTION
SR- 84 WB LANES
STA. 101+39.99 TO 106+17.71**

- PHASE II NOTES:**
- 1- CLOSE INSIDE LANE AND SHIFT TRAFFIC TO OUTSIDE LANE AND SHOULDER ON SR-84. INSTALL TRAFFIC CONTROL SIGN AND DEVICES AS PER FDOT STANDARD PLAN INDEX: 102-100 102-600, AND 102-613.
 - 2- BEGIN DRAINAGE IMPROVEMENT AND ROADWAY RECONSTRUCTION ON THE INSIDE LANE SR-84.
 - 3- INSTALL FINAL ASPHALT LAYER, PAVEMENT MARKINGS AND TRAFFIC SIGNS.

4/21/2022 3:30:39 PM ysooca C:\Users\ysooca\Documents\My Projects\Plantation Bridge\Concepts\Roadway\TYP5R003.dgn

THE OFFICIAL RECORD OF THIS SHEET IS THE ELECTRONIC FILE DIGITALLY SIGNED AND SEALED UNDER RULE 61G15-23.004, F.A.C.

REVISIONS				ENGINEER OF RECORD		STATE OF FLORIDA DEPARTMENT OF TRANSPORTATION			TRAFFIC CONTROL TYPICAL SECTIONS	SHEET NO.
DATE	DESCRIPTION	DATE	DESCRIPTION	BETSY JEFFERS, P.E. LICENSE NUMBER 50745 MARLIN ENGINEERING, INC. 3363 WEST COMMERCIAL BLVD., SUITE 115, FORT LAUDERDALE, FL 33309		ROAD NO.	COUNTY	FINANCIAL PROJECT ID		11
							BROWARD	448884-1-22-01		