

ONLINE RESOURCES

You can access the following library services with your library card through the library's website at <http://www.plantation.org/Library/>



The Florida Electronic Library (FEL) is a gateway to select Internet resources that offers access to comprehensive, accurate, and reliable information. Available resources include electronic magazines, newspapers, almanacs, encyclopedias, and books, providing information on topics such as current events, education, business, technology, and health issues. The FEL offers information for all age groups, including homework help for students and resources for teachers.



Start the conversation in your choice of over 70 world languages and dialects through courses crafted using conversational methodology. Every self-paced language course introduces the learner to cultural insights and grammatical nuances specific to their language of choice, delivered through native speaker dialogue, and created with each individual learner in mind. Download the free **Mango app** from the App Store or Play Store.



Miami Herald 1982-Current

Find information on topics related to community issues and events, business, education, government, and more.

News Bank

Find information on topics related to business, education, health, politics and more from a variety of news media including newspapers, newswires, blogs, videos and web-only content.



Sun-Sentinel 1986-Current

Find information on topics related to community issues and events, business, education, government, and more.

EBooks • Audiobooks • Movies • Test Guides



You can borrow **eBooks** with your library card through the digital library's website at <http://plantation.odilo.us> or by installing the free **ODILO app** on your tablet or smartphone.

Enter your library card number as user and password (HBH#####). Please call for assistance.

** In order to borrow eBooks, your account must be clear (no fines or overdues.)



Sign up with your library card (enter it without spaces) and create a free account. Instantly borrow audiobooks and movies. Go to: <https://www.hoopladigital.com/help> to learn more about getting started.



Mometrix **test guides** are now available online with a library card in good standing. Click the link on our home page.

The following test guides are available: ASVAB, GED, SAT, ACT, Police Officer, NCLEX PN, NCLEX RN, FTCE General knowledge, TOEFL, and CAST (Construction and Skilled Trades.)

CONTACT US

Adult Services 954-797-2140
Reference 954-797-2144
Children's Services 954-797-2145
Fax 954-797-2767

FOLLOW US

On Facebook @Friends of the Helen B. Hoffman Plantation Library
On Instagram @helenhoffmanplantationlibrary
On Twitter @helenhoffmanlibrary



SCAN TO GO TO OUR HOMEPAGE:

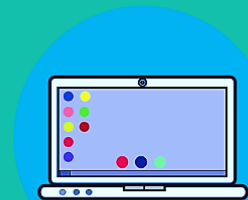


SCAN ME



Books are just the Beginning

STUDENT and TEEN Resources



The Helen B. Hoffman Plantation Library
501 North Fig Tree Lane • Plantation, Florida 33317
(954) 797-2140
www.plantation.org/library

PROGRAMS AND SERVICES

MISSION STATEMENT

It is the mission of the Helen B. Hoffman Plantation Library to enrich lives, build a sense of community, and foster lifelong learning in a diverse and non-judgmental environment by providing a comprehensive range of materials, programs, and services for people of all ages.



WELCOME TO YOUR HOMETOWN LIBRARY!

The **Helen B. Hoffman Plantation Library** offers a wide variety of services and materials that allow you to enrich your learning experience. Our librarians will be happy to guide you on your *Back to School* journey.

- Online catalog
- Books, Movies, Periodicals, Audio Materials
- Reference Services
- Public PCs with Microsoft Office and Internet
- Wireless Internet Access
- Public Printer
- Photocopier
- Fax Machine
- Scanner
- Hoopla
- eBooks
- Mango Online Language Learning
- Online Resources for Research
- Large-Print Book Collection
- Test Proctoring
- Mometrix Online Test Guides

MY ACCOUNT and RESERVES

The **Helen B. Hoffman Plantation Library Account** provides access to the online library catalog and to your account information including current loans, loan history, and more. You can also place holds and renew items using your library card.

Curbside pickup is available for items placed on hold.

TO ACCESS YOUR ACCOUNT:

1. Go to **www.plantation.org/library**
2. Click on **Online Catalog and My Account and Online Resources**
3. Click on [Access Online Catalog & My Account](#)
4. Click on **My Account**
5. Enter **Login name/barcode** and **Password***

To search for an item, enter the subject, title, or author and go from there.

TO PLACE A RESERVE ONLINE:

1. Go to **www.plantation.org/library**
2. Click on **Online Catalog and My Account and Online Resources**
3. Click on [Access Online Catalog & My Account](#)
4. Click on **My Account**
5. Enter **Login name/barcode** and **Password ***
6. Search the library catalog and select an item.
7. Click on RESERVE.

*(Your Login name and default password are your library card number beginning with **HBH###** or **HBHJ###** no spaces)

24/7 BOOK DROPS

The book drops are available at all times for Helen B. Hoffman Plantation Library materials only.

One book drop is located on the south side of the building (a walk-up on the canal side.) A second (drive-up) is located on the west side (back) of the library.

TEEN AND YOUNG ADULT

The **Helen B. Hoffman Plantation Library** has a collection of Fiction books and Graphic Novels in an area reserved for teens.



BE A PART OF THE ADOPT-A-SHELF PROGRAM

An opportunity for Volunteerism
and for Student Community Service

Volunteers will be assigned an area of the library to be responsible for. The program supervisor will provide training and orientation at the time of placement. Completion of a City of Plantation Volunteer Application is required. Applications are available at the library.

For more information call or contact Tanya Field at
954-797-2144

